

EB3/MAPRE3 Rabbit pAb

Catalog No.: A9591

Basic Information

Observed MW

35kDa

Calculated MW

32kDa

Category

Primary antibody

Applications

ELISA, WB

Cross-Reactivity

Mouse

Background

The protein encoded by this gene is a member of the RP/EB family of genes. The protein localizes to the cytoplasmic microtubule network and binds APCL, a homolog of the adenomatous polyposis coli tumor suppressor gene.

Recommended Dilutions

WB 1:1000 - 1:3000

Immunogen Information

Gene ID

22924

Swiss Prot

Q9UPY8

Immunogen

Recombinant fusion protein containing a sequence corresponding to amino acids 1-281 of human EB3/EB3/MAPRE3 (NP_036458.2).

Synonyms

EB3; RP3; EBF3; EBF3-S; EB3/MAPRE3

Contact

 | 400-999-6126

 | cn.market@abclonal.com.cn

 | www.abclonal.com.cn

Product Information

Source

Rabbit

Isotype

IgG

Purification

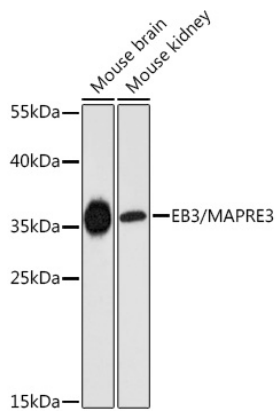
Affinity purification

Storage

Store at -20°C. Avoid freeze / thaw cycles.

Buffer: PBS with 0.01% thimerosal, 50% glycerol, pH7.3.

Validation Data



Western blot analysis of various lysates using EB3/MAPRE3 Rabbit pAb (A9591) at 1:3000 dilution.
Secondary antibody: HRP Goat Anti-Rabbit IgG (H+L) (AS014) at 1:10000 dilution.
Lysates/proteins: 25µg per lane.
Blocking buffer: 3% nonfat dry milk in TBST.
Detection: ECL Enhanced Kit (RM00021).
Exposure time: 90s.