

alpha 1 Spectrin Rabbit mAb

Catalog No.: A9597 **Recombinant**

Basic Information

Observed MW

280kDa

Calculated MW

280kDa

Category

Primary antibody

Applications

ELISA, WB

Cross-Reactivity

Human, Mouse, Rat

CloneNo number

ARC1650

Background

This gene encodes a member of a family of molecular scaffold proteins that link the plasma membrane to the actin cytoskeleton and functions in the determination of cell shape, arrangement of transmembrane proteins, and organization of organelles. The encoded protein is primarily composed of 22 spectrin repeats which are involved in dimer formation. It forms a component of the erythrocyte plasma membrane. Mutations in this gene result in a variety of hereditary red blood cell disorders, including elliptocytosis-2, pyropoikilocytosis, and spherocytosis, type 3.

Recommended Dilutions

WB 1:500 - 1:1000

Immunogen Information

Gene ID

6708

Swiss Prot

P02549

Immunogen

A synthetic peptide corresponding to a sequence within amino acids 2300-2400 of human alpha 1 Spectrin (P02549).

Synonyms

EL2; HPP; HS3; SPH3; SPTA; alpha 1 Spectrin

Contact

 | 400-999-6126

 | cn.market@abclonal.com.cn

 | www.abclonal.com.cn

Product Information

Source

Rabbit

Isotype

IgG

Purification

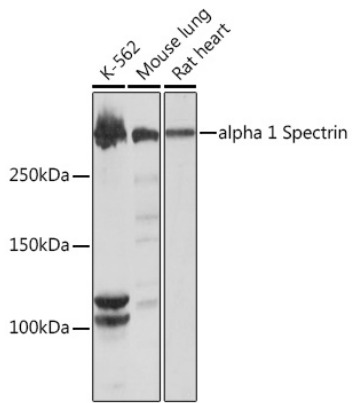
Affinity purification

Storage

Store at -20°C. Avoid freeze / thaw cycles.

Buffer: PBS with 0.02% sodium azide, 0.05% BSA, 50% glycerol, pH7.3.

Validation Data



Western blot analysis of extracts of various cell lines, using alpha 1 Spectrin Rabbit mAb (A9597) at 1:1000 dilution.

Secondary antibody: HRP Goat Anti-Rabbit IgG (H+L) (AS014) at 1:10000 dilution.

Lysates/proteins: 25µg per lane.

Blocking buffer: 3% nonfat dry milk in TBST.

Detection: ECL Basic Kit (RM00020).

Exposure time: 10s.