

# RPE65 Rabbit mAb

Catalog No.: A9615 **Recombinant** **3 Publications**

## Basic Information

### Observed MW

65kDa

### Calculated MW

61kDa

### Category

Primary antibody

### Applications

WB,IF-P,IHC-P,ELISA

### Cross-Reactivity

Mouse, Rat

### CloneNo number

ARC1659

## Background

The protein encoded by this gene is a component of the vitamin A visual cycle of the retina which supplies the 11-cis retinal chromophore of the photoreceptors opsin visual pigments. It is a member of the carotenoid cleavage oxygenase superfamily. All members of this superfamily are non-heme iron oxygenases with a seven-bladed propeller fold and oxidatively cleave carotenoid carbon:carbon double bonds. However, the protein encoded by this gene has acquired a divergent function that involves the concerted O-alkyl ester cleavage of its all-trans retinyl ester substrate and all-trans to 11-cis double bond isomerization of the retinyl moiety. As such, it performs the essential enzymatic isomerization step in the synthesis of 11-cis retinal. Mutations in this gene are associated with early-onset severe blinding disorders such as Leber congenital.

## Recommended Dilutions

<b>WB</b>	1:500 - 1:1000
<b>IF-P</b>	1:100 - 1:1000
<b>IHC-P</b>	1:100 - 1:1000
<b>ELISA</b>	Recommended starting concentration is 1 µg/mL. Please optimize the concentration based on your specific assay requirements.

## Contact

☎	400-999-6126
✉	cn.market@abclonal.com.cn
🌐	www.abclonal.com.cn

## Immunogen Information

### Gene ID

6121

### Swiss Prot

Q16518

### Immunogen

Synthetic peptide. This information is considered to be commercially sensitive.

### Synonyms

p63; BCO3; LCA2; RP20; rd12; mRPE65; sRPE65; RPE65

## Product Information

### Source

Rabbit

### Isotype

IgG

### Purification

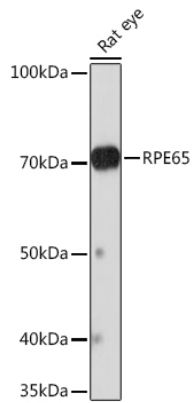
Affinity purification

### Storage

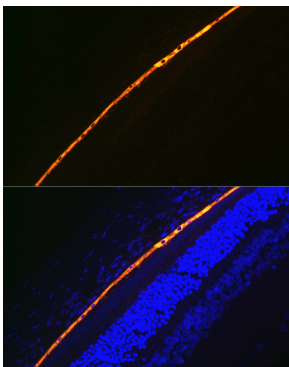
Store at -20°C. Avoid freeze / thaw cycles.

Buffer: PBS containing 50% glycerol and 0.05% BSA, preserved with proclin300 or sodium azide (as specified on the Certificate of Analysis), pH 7.3.

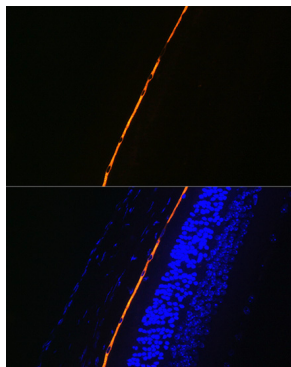
## Validation Data



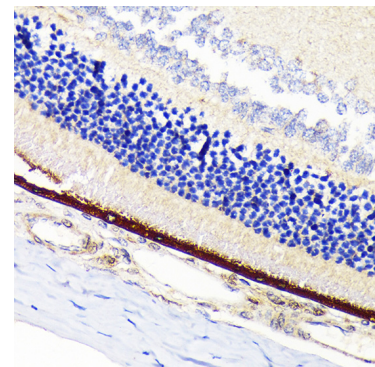
Western blot analysis of lysates from Rat eye, using RPE65 Rabbit mAb (A9615) at 1:1000 dilution.  
Secondary antibody: HRP-conjugated Goat anti-Rabbit IgG (H+L) (AS014) at 1:10000 dilution.  
Lysates/proteins: 25µg per lane.  
Blocking buffer: 3% nonfat dry milk in TBST.  
Detection: ECL Basic Kit (RM00020).  
Exposure time: 3min.



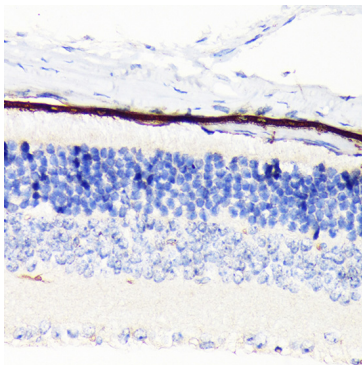
Immunofluorescence analysis of paraffin-embedded rat eye using RPE65 Rabbit mAb (A9615) at dilution of 1:100 (40x lens).  
Secondary antibody: Cy3-conjugated Goat anti-Rabbit IgG (H+L) (AS007) at 1:500 dilution. Blue: DAPI for nuclear staining.



Immunofluorescence analysis of paraffin-embedded mouse eye using RPE65 Rabbit mAb (A9615) at dilution of 1:100 (40x lens).  
Secondary antibody: Cy3-conjugated Goat anti-Rabbit IgG (H+L) (AS007) at 1:500 dilution. Blue: DAPI for nuclear staining.



Immunohistochemistry analysis of paraffin-embedded Rat retina using RPE65 Rabbit mAb (A9615) at dilution of 1:100 (40x lens).  
Microwave antigen retrieval performed with 0.01M Tris/EDTA Buffer (pH 9.0) prior to IHC staining.



Immunohistochemistry analysis of paraffin-embedded Mouse retina using RPE65 Rabbit mAb (A9615) at dilution of 1:100 (40x lens).  
Microwave antigen retrieval performed with 0.01M Tris/EDTA Buffer (pH 9.0) prior to IHC staining.