

SF3B3/SAP130 Rabbit mAb

Catalog No.: A9624 **Recombinant**

Basic Information

Observed MW

130-136kDa

Calculated MW

136kDa

Category

Primary antibody

Applications

ELISA, WB, IHC-P, IF/ICC

Cross-Reactivity

Human, Mouse, Rat

CloneNo number

ARC1667

Background

This gene encodes subunit 3 of the splicing factor 3b protein complex. Splicing factor 3b, together with splicing factor 3a and a 12S RNA unit, forms the U2 small nuclear ribonucleoproteins complex (U2 snRNP). The splicing factor 3b/3a complex binds pre-mRNA upstream of the intron's branch site in a sequence independent manner and may anchor the U2 snRNP to the pre-mRNA. Splicing factor 3b is also a component of the minor U12-type spliceosome. Subunit 3 has also been identified as a component of the STAGA (SPT3-TAF(II)31-GCN5L acetylase) transcription coactivator-HAT (histone acetyltransferase) complex, and the TFTC (TATA-binding-protein-free TAF(II)-containing complex). These complexes may function in chromatin modification, transcription, splicing, and DNA repair.

Recommended Dilutions

WB	1:500 - 1:2000
IHC-P	1:50 - 1:200
IF/ICC	1:50 - 1:200

Immunogen Information

Gene ID

23450

Swiss Prot

Q15393

Immunogen

Recombinant fusion protein containing a sequence corresponding to amino acids 1101-1217 of human SF3B3/SAP130 (Q15393).

Synonyms

RSE1; SAP130; SF3b130; STAF130; SF3B3/SAP130

Contact

 | 400-999-6126

 | cn.market@abclonal.com.cn
 | www.abclonal.com.cn

Product Information

Source

Rabbit

Isotype

IgG

Purification

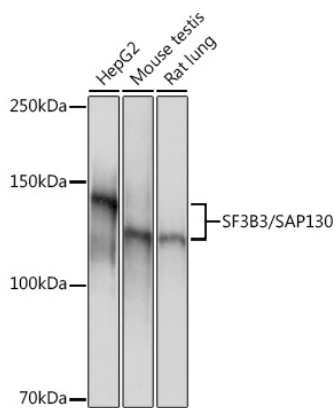
Affinity purification

Storage

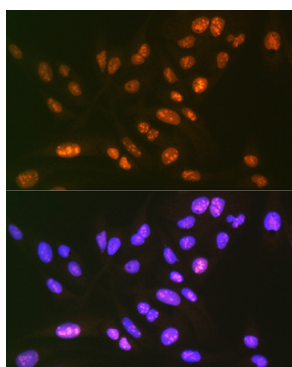
Store at -20°C. Avoid freeze / thaw cycles.

Buffer: PBS with 0.02% sodium azide, 0.05% BSA, 50% glycerol, pH7.3.

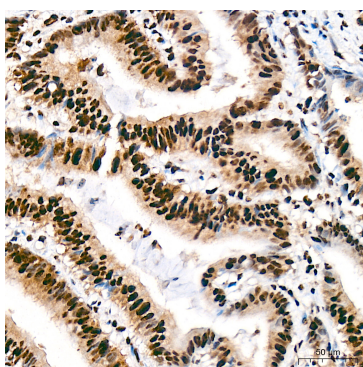
Validation Data



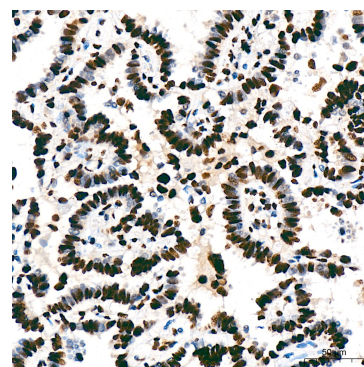
Western blot analysis of various lysates using SF3B3/SAP130 Rabbit mAb (A9624) at 1:1000 dilution. Secondary antibody: HRP Goat Anti-Rabbit IgG (H+L) (AS014) at 1:10000 dilution. Lysates/proteins: 25µg per lane. Blocking buffer: 3% nonfat dry milk in TBST. Detection: ECL Basic Kit (RM00020). Exposure time: 1s.



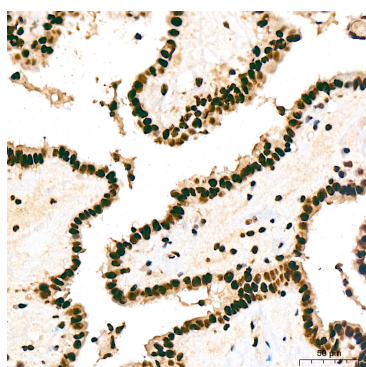
Immunofluorescence analysis of U-2 OS cells using SF3B3/SAP130 Rabbit mAb (A9624) at dilution of 1:100 (40x lens). Secondary antibody: Cy3 Goat Anti-Rabbit IgG (H+L) (AS007) at 1:500 dilution. Blue: DAPI for nuclear staining.



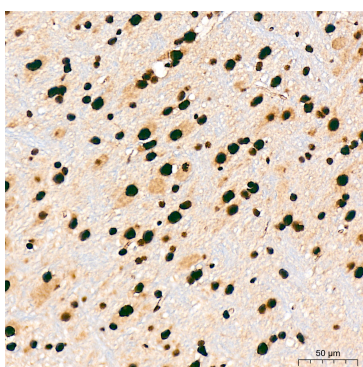
Immunohistochemistry analysis of SF3B3/SAP130 in paraffin-embedded human colon carcinoma tissue using SF3B3/SAP130 Rabbit mAb (A9624) at a dilution of 1:200 (40x lens). High pressure antigen retrieval was performed with 0.01 M citrate buffer (pH 6.0) prior to IHC staining.



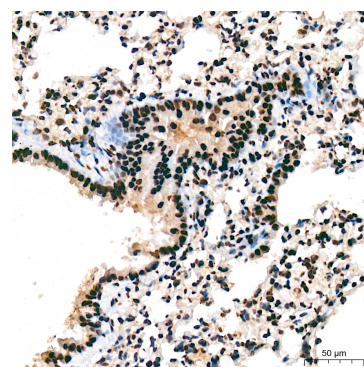
Immunohistochemistry analysis of SF3B3/SAP130 in paraffin-embedded Human lung adenocarcinoma tissue using SF3B3/SAP130 Rabbit mAb (A9624) at a dilution of 1:200 (40x lens). High pressure antigen retrieval was performed with 0.01 M citrate buffer (pH 6.0) prior to IHC staining.



Immunohistochemistry analysis of SF3B3/SAP130 in paraffin-embedded human thyroid cancer tissue using SF3B3/SAP130 Rabbit mAb (A9624) at a dilution of 1:200 (40x lens). High pressure antigen retrieval was performed with 0.01 M citrate buffer (pH 6.0) prior to IHC staining.

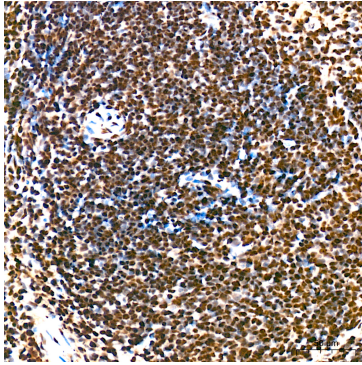


Immunohistochemistry analysis of SF3B3/SAP130 in paraffin-embedded mouse brain tissue using SF3B3/SAP130 Rabbit mAb (A9624) at a dilution of 1:200 (40x lens). High pressure antigen retrieval was performed with 0.01 M citrate buffer (pH 6.0) prior to IHC staining.

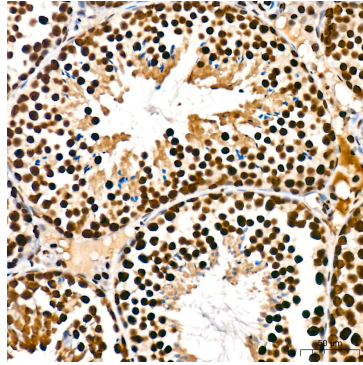


Immunohistochemistry analysis of SF3B3/SAP130 in paraffin-embedded mouse lung tissue using SF3B3/SAP130 Rabbit mAb (A9624) at a dilution of 1:200 (40x lens). High pressure antigen retrieval was performed with 0.01 M citrate buffer (pH 6.0) prior to IHC staining.

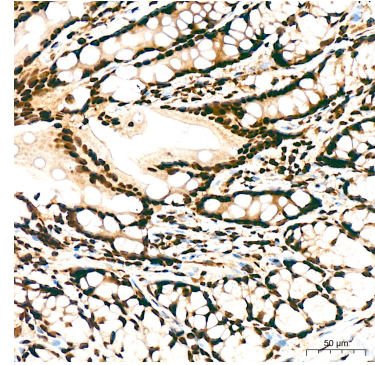
Validation Data



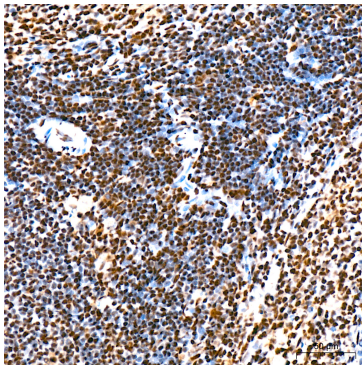
Immunohistochemistry analysis of SF3B3/SAP130 in paraffin-embedded mouse spleen tissue using SF3B3/SAP130 Rabbit mAb (A9624) at a dilution of 1:200 (40x lens). High pressure antigen retrieval was performed with 0.01 M citrate buffer (pH 6.0) prior to IHC staining.



Immunohistochemistry analysis of SF3B3/SAP130 in paraffin-embedded mouse testis tissue using SF3B3/SAP130 Rabbit mAb (A9624) at a dilution of 1:200 (40x lens). High pressure antigen retrieval was performed with 0.01 M citrate buffer (pH 6.0) prior to IHC staining.



Immunohistochemistry analysis of SF3B3/SAP130 in paraffin-embedded rat colon tissue using SF3B3/SAP130 Rabbit mAb (A9624) at a dilution of 1:200 (40x lens). High pressure antigen retrieval was performed with 0.01 M citrate buffer (pH 6.0) prior to IHC staining.



Immunohistochemistry analysis of SF3B3/SAP130 in paraffin-embedded rat spleen tissue using SF3B3/SAP130 Rabbit mAb (A9624) at a dilution of 1:200 (40x lens). High pressure antigen retrieval was performed with 0.01 M citrate buffer (pH 6.0) prior to IHC staining.