

Cytokeratin 12 (KRT12) Rabbit pAb

Catalog No.: A9642 **2 Publications**

Basic Information

Observed MW

53kDa

Calculated MW

54kDa

Category

Primary antibody

Applications

ELISA, WB

Cross-Reactivity

Human, Mouse, Rat

Background

KRT12 encodes the type I intermediate filament chain keratin 12, expressed in corneal epithelia. Mutations in this gene lead to Meesmann corneal dystrophy.

Recommended Dilutions

WB 1:500 - 1:1000

Immunogen Information

Gene ID

3859

Swiss Prot

Q99456

Immunogen

Recombinant fusion protein containing a sequence corresponding to amino acids 295-494 of human Cytokeratin 12 (Cytokeratin 12 (KRT12)) (NP_000214.1).

Synonyms

K12; MECD1; Cytokeratin 12 (KRT12)

Contact

 | 400-999-6126

 | cn.market@abclonal.com.cn

 | www.abclonal.com.cn

Product Information

Source

Rabbit

Isotype

IgG

Purification

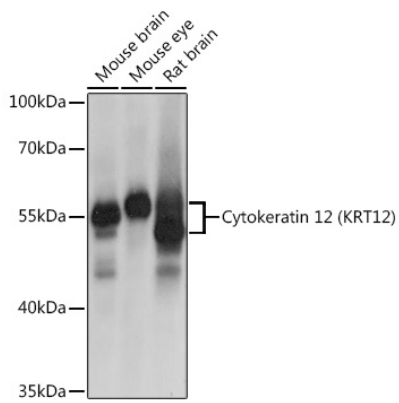
Affinity purification

Storage

Store at -20°C. Avoid freeze / thaw cycles.

Buffer: PBS with 0.01% thimerosal, 50% glycerol, pH7.3.

Validation Data



Western blot analysis of various lysates using Cytokeratin 12 (KRT12) Rabbit pAb (A9642) at 1:1000 dilution.

Secondary antibody: HRP Goat Anti-Rabbit IgG (H+L) (AS014) at 1:10000 dilution.

Lysates/proteins: 25µg per lane.

Blocking buffer: 3% nonfat dry milk in TBST.

Detection: ECL Basic Kit (RM00020).

Exposure time: 1s.