

γ-Tubulin Rabbit mAb

Catalog No.: A9657 **Recombinant** **3 Publications**

Basic Information

Observed MW

49kDa

Calculated MW

51kDa

Category

Primary antibody

Applications

ELISA, WB, IHC-P, IF/ICC

Cross-Reactivity

Human, Mouse, Rat

CloneNo number

ARC1684

Background

This gene encodes a member of the tubulin superfamily. The encoded protein localizes to the centrosome where it binds to microtubules as part of a complex referred to as the gamma-tubulin ring complex. The protein mediates microtubule nucleation and is required for microtubule formation and progression of the cell cycle. A pseudogene of this gene is found on chromosome 7.

Recommended Dilutions

WB	1:500 - 1:1000
IHC-P	1:50 - 1:200
IF/ICC	1:50 - 1:200

Immunogen Information

Gene ID

7283

Swiss Prot

P23258

Immunogen

Recombinant fusion protein containing a sequence corresponding to amino acids 231-451 of human γ-Tubulin (P23258).

Synonyms

TUBG; GCP-1; CDCBM4; TUBGCP1; γ-Tubulin

Contact

☎ | 400-999-6126

✉ | cn.market@abclonal.com.cn

🌐 | www.abclonal.com.cn

Product Information

Source

Rabbit

Isotype

IgG

Purification

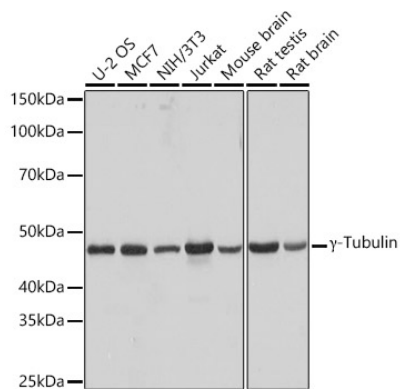
Affinity purification

Storage

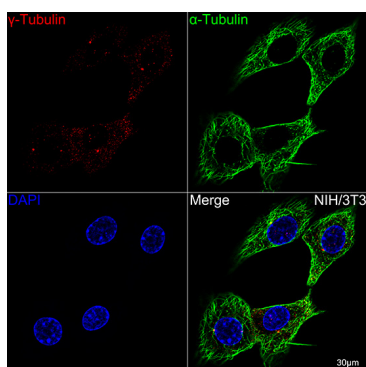
Store at -20°C. Avoid freeze / thaw cycles.

Buffer: PBS with 0.02% sodium azide, 0.05% BSA, 50% glycerol, pH7.3.

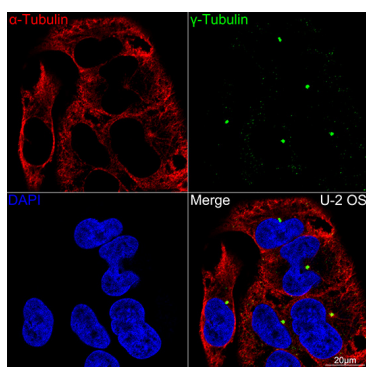
Validation Data



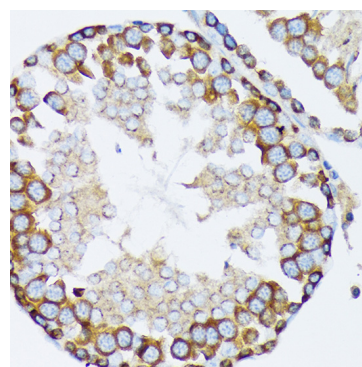
Western blot analysis of various lysates using γ -Tubulin Rabbit mAb (A9657) at 1:1000 dilution. Secondary antibody: HRP Goat Anti-Rabbit IgG (H+L) (AS014) at 1:10000 dilution. Lysates/proteins: 25 μ g per lane. Blocking buffer: 3% nonfat dry milk in TBST. Detection: ECL Basic Kit (RM00020). Exposure time: 3s.



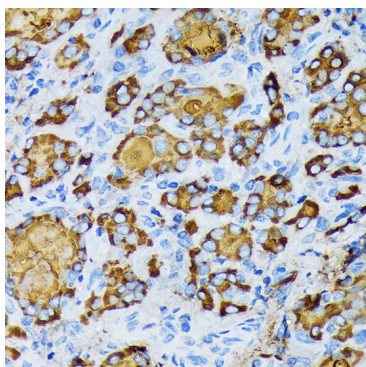
Confocal imaging of NIH-3T3 cells using γ -Tubulin Rabbit mAb (A9657, dilution 1:100) (Red). The cells were counterstained with Alpha-tubulin (ubiquitous) chain Rabbit mAb (AC039, dilution 1:100) (Green). DAPI was used for nuclear staining (blue). Objective: 60x.



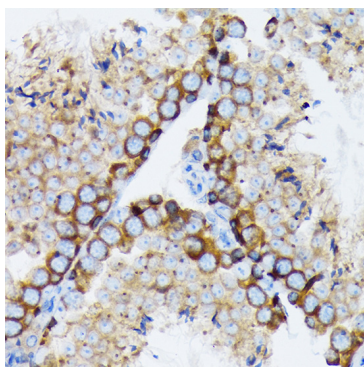
Confocal imaging of U-2OS cells using γ -Tubulin Rabbit mAb (A9657, dilution 1:100) (Green). The cells were counterstained with Alpha-tubulin (ubiquitous) chain Rabbit mAb (AC039, dilution 1:100) (Red). DAPI was used for nuclear staining (blue). Objective: 60x.



Immunohistochemistry analysis of paraffin-embedded Rat testis using γ -Tubulin Rabbit mAb (A9657) at dilution of 1:100 (40x lens). Perform microwave antigen retrieval with 10 mM Tris/EDTA buffer pH 9.0 before commencing with IHC staining protocol.



Immunohistochemistry analysis of paraffin-embedded Human thyroid cancer using γ -Tubulin Rabbit mAb (A9657) at dilution of 1:100 (40x lens). Perform microwave antigen retrieval with 10 mM Tris/EDTA buffer pH 9.0 before commencing with IHC staining protocol.



Immunohistochemistry analysis of paraffin-embedded Mouse testis using γ -Tubulin Rabbit mAb (A9657) at dilution of 1:100 (40x lens). Perform microwave antigen retrieval with 10 mM Tris/EDTA buffer pH 9.0 before commencing with IHC staining protocol.