

TOMM22 Rabbit mAb

Catalog No.: A9666 **Recombinant**

Basic Information

Observed MW

18kDa

Calculated MW

16kDa

Category

Primary antibody

Applications

WB,IHC-P,IP,ELISA

Cross-Reactivity

Human, Mouse, Rat

CloneNo number

ARC1688

Background

The protein encoded by this gene is an integral membrane protein of the mitochondrial outer membrane. The encoded protein interacts with TOMM20 and TOMM40, and forms a complex with several other proteins to import cytosolic preproteins into the mitochondrion.

Recommended Dilutions

WB 1:500 - 1:2000

IHC-P 1:100 - 1:1000

IP 0.5µg-4µg antibody for 200µg-400µg extracts of whole cells

ELISA Recommended starting concentration is 1 µg/mL. Please optimize the concentration based on your specific assay requirements.

Immunogen Information

Gene ID

56993

Swiss Prot

Q9NS69

Immunogen

A synthetic peptide corresponding to a sequence within amino acids 1-100 of human TOMM22 (Q9NS69).

Synonyms

1C9-2; TOM22; MST065; MSTP065; TOMM22

Contact

☎ | 400-999-6126

✉ | cn.market@abclonal.com.cn

🌐 | www.abclonal.com.cn

Product Information

Source

Rabbit

Isotype

IgG

Purification

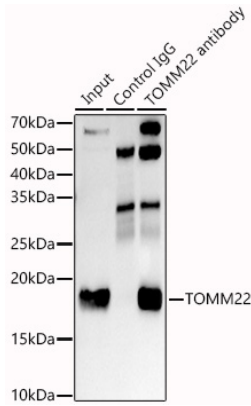
Affinity purification

Storage

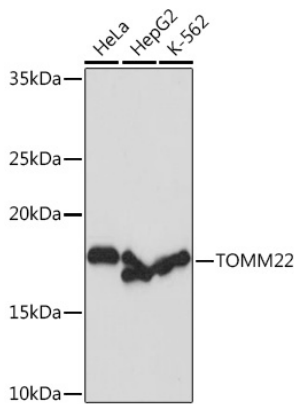
Store at -20°C. Avoid freeze / thaw cycles.

Buffer: PBS with 0.02% sodium azide,0.05% BSA,50% glycerol,pH7.3.

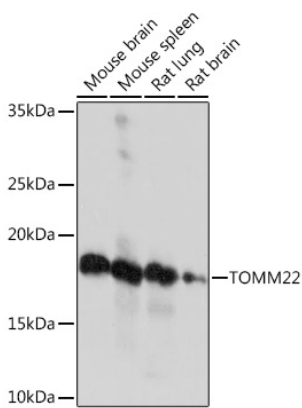
Validation Data



Immunoprecipitation analysis of 300 μ g extracts of K-562 cells using 3 μ g TOMM22 antibody (A9666). Western blot was performed from the immunoprecipitate using TOMM22 antibody (A9666) at a dilution of 1:1000.

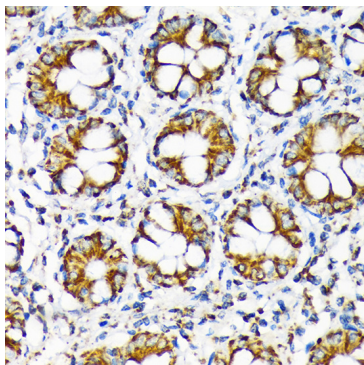


Western blot analysis of lysates from HeLa cells, using TOMM22 Rabbit mAb (A9666) at 1:1000 dilution. Secondary antibody: HRP-conjugated Goat anti-Rabbit IgG (H+L) (AS014) at 1:10000 dilution. Lysates/proteins: 25 μ g per lane. Blocking buffer: 3% nonfat dry milk in TBST. Detection: ECL Basic Kit (RM00020). Exposure time: 1s.



Western blot analysis of various lysates using TOMM22 Rabbit mAb (A9666) at 1:1000 dilution. Secondary antibody: HRP-conjugated Goat anti-Rabbit IgG (H+L) (AS014) at 1:10000 dilution. Lysates/proteins: 25 μ g per lane. Blocking buffer: 3% nonfat dry milk in TBST. Detection: ECL Enhanced Kit (RM00021). Exposure time: 3min.

Validation Data



Immunohistochemistry analysis of paraffin-embedded Human colon using TOMM22 Rabbit mAb (A9666) at dilution of 1:100 (40x lens). Microwave antigen retrieval performed with 0.01M Tris/EDTA Buffer (pH 9.0) prior to IHC staining.