

CHERP Rabbit pAb

Catalog No.: A9702

Basic Information

Observed MW

140kDa

Calculated MW

104kDa

Category

Primary antibody

Applications

WB, ELISA

Cross-Reactivity

Human, Mouse, Rat

Background

Enables transmembrane transporter binding activity. Involved in positive regulation of calcineurin-NFAT signaling cascade and release of sequestered calcium ion into cytosol. Acts upstream of or within cellular calcium ion homeostasis and negative regulation of cell population proliferation. Located in perinuclear region of cytoplasm.

Recommended Dilutions

WB 1:500 - 1:2000

ELISA Recommended starting concentration is 1 µg/mL. Please optimize the concentration based on your specific assay requirements.

Immunogen Information

Gene ID

10523

Swiss Prot

Q8IWX8

Immunogen

Synthetic peptide. This information is considered to be commercially sensitive.

Synonyms

SRA1; DAN16; SCAF6; CHERP

Contact

 | 400-999-6126

 | cn.market@abclonal.com.cn

 | www.abclonal.com.cn

Product Information

Source

Rabbit

Isotype

IgG

Purification

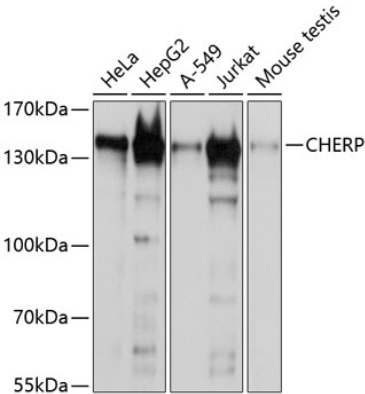
Affinity purification

Storage

Store at -20°C. Avoid freeze / thaw cycles.

Buffer: PBS with 0.02% sodium azide, 50% glycerol, pH 7.3.

Validation Data



Western blot analysis of various lysates using CHERP Rabbit pAb (A9702) at 1:1000 dilution.
Secondary antibody: HRP-conjugated Goat anti-Rabbit IgG (H+L) (AS014) at 1:10000 dilution.
Lysates/proteins: 25µg per lane.
Blocking buffer: 3% nonfat dry milk in TBST.
Detection: ECL Basic Kit (RM00020).
Exposure time: 60s.