

MT-ND1 Rabbit mAb

Catalog No.: A9743 **Recombinant**

Basic Information

Observed MW

35kDa

Calculated MW

36kDa

Category

Primary antibody

Applications

ELISA, WB

Cross-Reactivity

Mouse, Rat

CloneNo number

ARC1728

Background

Enables NADH dehydrogenase (ubiquinone) activity. Involved in mitochondrial electron transport, NADH to ubiquinone and mitochondrial respiratory chain complex I assembly. Located in mitochondrial membrane. Part of mitochondrial respiratory chain complex I. Implicated in several diseases, including MELAS syndrome; neurodegenerative disease (multiple); optic nerve disease (multiple); toxic shock syndrome; and type 2 diabetes mellitus. Biomarker of Alzheimer's disease; Parkinson's disease; and multiple sclerosis.

Recommended Dilutions

WB 1:500 - 1:1000

Immunogen Information

Gene ID

4535

Swiss Prot

P03886

Immunogen

A synthetic peptide corresponding to a sequence within amino acids 1-100 of human MT-ND1 (P03886).

Synonyms

MTND1; ND1; MT-ND1

Contact

☎ | 400-999-6126

✉ | cn.market@abclonal.com.cn

🌐 | www.abclonal.com.cn

Product Information

Source

Rabbit

Isotype

IgG

Purification

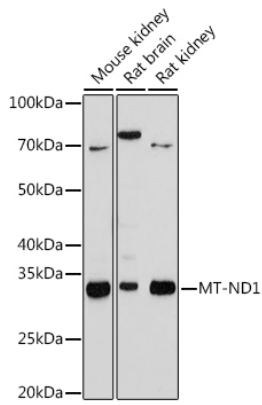
Affinity purification

Storage

Store at -20°C. Avoid freeze / thaw cycles.

Buffer: PBS with 0.02% sodium azide, 0.05% BSA, 50% glycerol, pH7.3.

Validation Data



Western blot analysis of extracts of various cell lines, using MT-ND1 antibody (A9743) at 1:1000 dilution.
Secondary antibody: HRP Goat Anti-Rabbit IgG (H+L) (AS014) at 1:10000 dilution.
Lysates/proteins: 25µg per lane.
Blocking buffer: 3% nonfat dry milk in TBST.
Detection: ECL Basic Kit (RM00020).
Exposure time: 180s.