

TIN2/TINF2 Rabbit mAb

Catalog No.: A9750

Recombinant

1 Publications

Basic Information

Observed MW

45kDa

Calculated MW

50kDa

Category

Primary antibody

Applications

ELISA, WB

Cross-Reactivity

Human, Mouse, Rat

CloneNo number

ARC1732

Background

This gene encodes one of the proteins of the shelterin, or telosome, complex which protects telomeres by allowing the cell to distinguish between telomeres and regions of DNA damage. The protein encoded by this gene is a critical part of shelterin; it interacts with the three DNA-binding proteins of the shelterin complex, and it is important for assembly of the complex. Mutations in this gene cause dyskeratosis congenita (DKC), an inherited bone marrow failure syndrome.

Recommended Dilutions

WB 1:500 - 1:1000

Immunogen Information

Gene ID

26277

Swiss Prot

Q9BSI4

Immunogen

Recombinant fusion protein containing a sequence corresponding to amino acids 210-309 of human TIN2/TINF2 (Q9BSI4).

Synonyms

TIN2; DKCA3; TIN2/TINF2

Contact

☎ | 400-999-6126

✉ | cn.market@abclonal.com.cn

🌐 | www.abclonal.com.cn

Product Information

Source

Rabbit

Isotype

IgG

Purification

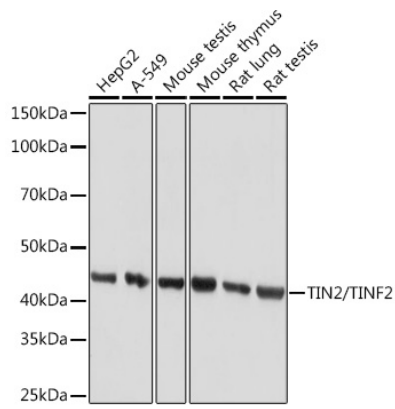
Affinity purification

Storage

Store at -20°C. Avoid freeze / thaw cycles.

Buffer: PBS with 0.02% sodium azide, 0.05% BSA, 50% glycerol, pH7.3.

Validation Data



Western blot analysis of extracts of various cell lines, using TIN2/TINF2 Rabbit mAb (A9750) at 1:1000 dilution.

Secondary antibody: HRP Goat Anti-Rabbit IgG (H+L) (AS014) at 1:10000 dilution.

Lysates/proteins: 25µg per lane.

Blocking buffer: 3% nonfat dry milk in TBST.

Detection: ECL Basic Kit (RM00020).

Exposure time: 10s.