

# MT-CYB Rabbit pAb

Catalog No.: A9762 **8 Publications**

## Basic Information

### Observed MW

43kDa

### Calculated MW

43kDa

### Category

Primary antibody

### Applications

ELISA, WB

### Cross-Reactivity

Human, Mouse, Rat

## Background

Predicted to enable metal ion binding activity and ubiquinol-cytochrome-c reductase activity. Predicted to be involved in several processes, including electron transport coupled proton transport; mitochondrial electron transport, ubiquinol to cytochrome c; and response to glucagon. Located in membrane and mitochondrion. Is integral component of mitochondrial inner membrane. Human ortholog(s) of this gene implicated in ovarian carcinoma and urinary bladder cancer. Orthologous to human MT-CYB (mitochondrially encoded cytochrome b).

## Recommended Dilutions

WB 1:500 - 1:1000

## Immunogen Information

### Gene ID

17711

### Swiss Prot

P00158

### Immunogen

A synthetic peptide corresponding to a sequence within amino acids 3-103 of mouse MT-CYB (NP\_904340.1).

### Synonyms

CYTB; MT-CYB

## Contact

 | 400-999-6126

 | [cn.market@abclonal.com.cn](mailto:cn.market@abclonal.com.cn)

 | [www.abclonal.com.cn](http://www.abclonal.com.cn)

## Product Information

### Source

Rabbit

### Isotype

IgG

### Purification

Affinity purification

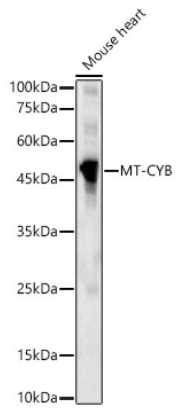
### Storage

Store at -20°C. Avoid freeze / thaw cycles.

Buffer: PBS with 0.02% sodium azide, 50% glycerol, pH 7.3.

## Validation Data

---



Western blot analysis of Mouse heart, using MT-CYB Rabbit pAb (A9762) at 1:1000 dilution.  
Secondary antibody: HRP Goat Anti-Rabbit IgG (H+L) (AS014) at 1:10000 dilution.  
Lysates/proteins: 25µg per lane.  
Blocking buffer: 3% nonfat dry milk in TBST.  
Detection: ECL Basic Kit (RM00020).  
Exposure time: 90s.