

CD3D Rabbit mAb

Catalog No.: A9770

Recombinant

1 Publications

Basic Information

Observed MW

23kDa

Calculated MW

19kDa

Category

Primary antibody

Applications

WB,IF/ICC,FC,ELISA

Cross-Reactivity

Human, Mouse, Rat

CloneNo number

ARC1741

Background

The protein encoded by this gene is part of the T-cell receptor/CD3 complex (TCR/CD3 complex) and is involved in T-cell development and signal transduction. The encoded membrane protein represents the delta subunit of the CD3 complex, and along with four other CD3 subunits, binds either TCR alpha/beta or TCR gamma/delta to form the TCR/CD3 complex on the surface of T-cells. Defects in this gene are a cause of severe combined immunodeficiency autosomal recessive T-cell-negative/B-cell-positive/NK-cell-positive (SCIDBNK). Two transcript variants encoding different isoforms have been found for this gene. Other variants may also exist, but the full-length natures of their transcripts has yet to be defined.

Recommended Dilutions

WB 1:500 - 1:1000

IF/ICC 1:200 - 1:800

FC 1:50 - 1:200

ELISA Recommended starting concentration is 1 µg/mL. Please optimize the concentration based on your specific assay requirements.

Immunogen Information

Gene ID

915

Swiss Prot

P04234

Immunogen

A synthetic peptide corresponding to a sequence within amino acids 72-171 of human CD3D (P04234).

Synonyms

T3D; IMD19; CD3DELTA; CD3-DELTA; CD3D

Contact

☎ | 400-999-6126

✉ | cn.market@abclonal.com.cn

🌐 | www.abclonal.com.cn

Product Information

Source

Rabbit

Isotype

IgG

Purification

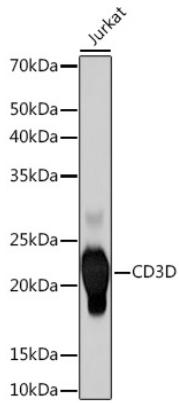
Affinity purification

Storage

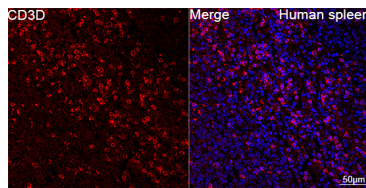
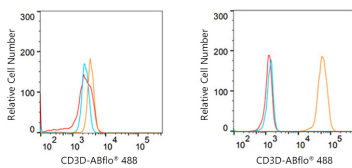
Store at -20°C. Avoid freeze / thaw cycles.

Buffer: PBS with 0.02% sodium azide,0.05% BSA,50% glycerol,pH7.3.

Validation Data



Western blot analysis of lysates from Jurkat cells, using CD3D Rabbit mAb (A9770) at 1:500 dilution.
Secondary antibody: HRP-conjugated Goat anti-Rabbit IgG (H+L) (AS014) at 1:10000 dilution.
Lysates/proteins: 25µg per lane.
Blocking buffer: 3% nonfat dry milk in TBST.
Detection: ECL Basic Kit (RM00020).
Exposure time: 60s.



Flow cytometry: 1×10^6 Raji cells (negative control, left) and Jurkat cells (right) were surface-stained with CD3D Rabbit mAb (A9770, 2.5 µg/mL orange line) or ABflo® 488 IgG isotype control (AC042, 2.5 µg/mL, blue line). Non-fluorescently stained cells were used as blank control (red line).

Confocal imaging of paraffin-embedded Human spleen tissue using CD3D Rabbit mAb (A9770, dilution 1:200) followed by a further incubation with Cy3 Goat Anti-Rabbit IgG (H+L) (AS007, dilution 1:500) (Red). DAPI was used for nuclear staining (Blue). Objective: 40x. Perform high pressure antigen retrieval with 0.01 M citrate buffer (pH 6.0) prior to IF staining.