

# EPHB2 Rabbit pAb

Catalog No.: A9813

1 Publications

## Basic Information

**Observed MW**

117kDa

**Calculated MW**

117kDa

**Category**

Primary antibody

**Applications**

ELISA,WB

**Cross-Reactivity**

Human, Mouse

## Background

This gene encodes a member of the Eph receptor family of receptor tyrosine kinase transmembrane glycoproteins. These receptors are composed of an N-terminal glycosylated ligand-binding domain, a transmembrane region and an intracellular kinase domain. They bind ligands called ephrins and are involved in diverse cellular processes including motility, division, and differentiation. A distinguishing characteristic of Eph-ephrin signaling is that both receptors and ligands are competent to transduce a signaling cascade, resulting in bidirectional signaling. This protein belongs to a subgroup of the Eph receptors called EphB. Proteins of this subgroup are distinguished from other members of the family by sequence homology and preferential binding affinity for membrane-bound ephrin-B ligands. Allelic variants are associated with prostate and brain cancer susceptibility. Alternative splicing results in multiple transcript variants.

## Recommended Dilutions

WB 1:500 - 1:2000

## Immunogen Information

**Gene ID**

2048

**Swiss Prot**

P29323

**Immunogen**

Recombinant fusion protein containing a sequence corresponding to amino acids 250-540 of human EPHB2 (NP\_059145.2).

**Synonyms**

DRT; EK5; ERK; CAPB; Hek5; PCBC; EPHT3; Tyro5; BDPLT22; EPHB2

## Contact

 | 400-999-6126 | [cn.market@abclonal.com.cn](mailto:cn.market@abclonal.com.cn) | [www.abclonal.com.cn](http://www.abclonal.com.cn)

## Product Information

**Source**

Rabbit

**Isotype**

IgG

**Purification**

Affinity purification

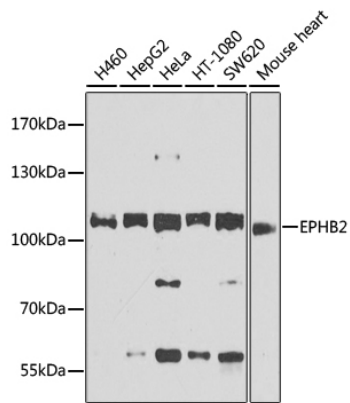
**Storage**

Store at -20°C. Avoid freeze / thaw cycles.

Buffer: PBS with 0.02% sodium azide,50% glycerol,pH7.3.

## Validation Data

---



Western blot analysis of extracts of various cell lines, using EPHB2 antibody (A9813) at 1:1000 dilution.  
Secondary antibody: HRP Goat Anti-Rabbit IgG (H+L) (AS014) at 1:10000 dilution.  
Lysates/proteins: 25µg per lane.  
Blocking buffer: 3% nonfat dry milk in TBST.  
Detection: ECL Basic Kit (RM00020).  
Exposure time: 30s.