

OPA1 Rabbit pAb

Catalog No.: A9833 **37 Publications**

Basic Information

Observed MW

80-100kDa

Calculated MW

112kDa

Category

Primary antibody

Applications

ELISA,WB,IF/ICC

Cross-Reactivity

Human, Mouse, Rat

Background

The protein encoded by this gene is a nuclear-encoded mitochondrial protein with similarity to dynamin-related GTPases. The encoded protein localizes to the inner mitochondrial membrane and helps regulate mitochondrial stability and energy output. This protein also sequesters cytochrome c. Mutations in this gene have been associated with optic atrophy type 1, which is a dominantly inherited optic neuropathy resulting in progressive loss of visual acuity, leading in many cases to legal blindness.

Recommended Dilutions

WB	1:2000 - 1:8000
IF/ICC	1:50 - 1:200

Immunogen Information

Gene ID	Swiss Prot
4976	O60313

Immunogen

Recombinant fusion protein containing a sequence corresponding to amino acids 200-600 of human OPA1 (NP_056375.2).

Synonyms

NPG; NTG; MGM1; BERHS; largeG; MTDPS14; OPA1

Contact

	400-999-6126
	cn.market@abclonal.com.cn
	www.abclonal.com.cn

Product Information

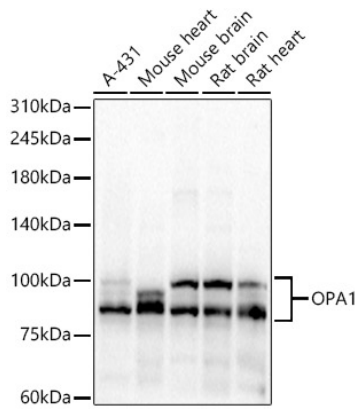
Source	Isotype	Purification
Rabbit	IgG	Affinity purification

Storage

Store at -20°C. Avoid freeze / thaw cycles.

Buffer: PBS with 0.05% proclin300,50% glycerol,pH7.3.

Validation Data



Western blot analysis of various lysates, using OPA1 antibody (A9833) at 1:7000 dilution.
Secondary antibody: HRP Goat Anti-Rabbit IgG (H+L) (AS014) at 1:10000 dilution.
Lysates/proteins: 25µg per lane.
Blocking buffer: 3% nonfat dry milk in TBST.
Detection: ECL Basic Kit (RM00020).
Exposure time: 30s.