

OTC Rabbit pAb

Catalog No.: A9834

Basic Information

Observed MW

40kDa/42kDa

Calculated MW

40kDa

Category

Primary antibody

Applications

ELISA, WB

Cross-Reactivity

Human, Mouse, Rat

Background

This nuclear gene encodes a mitochondrial matrix enzyme. The encoded protein is involved in the urea cycle which functions to detoxify ammonia into urea for excretion. Mutations in this enzyme lead to ornithine transcarbamylase deficiency, which causes hyperammonemia.

Recommended Dilutions

WB 1:1000 - 1:4000

Immunogen Information

Gene ID

5009

Swiss Prot

P00480

Immunogen

Recombinant fusion protein containing a sequence corresponding to amino acids 215-354 of human OTC (NP_000522.3).

Synonyms

OCTD; OTC1; OTCD; OTCase; OTC

Contact

☎ | 400-999-6126

✉ | cn.market@abclonal.com.cn

🌐 | www.abclonal.com.cn

Product Information

Source

Rabbit

Isotype

IgG

Purification

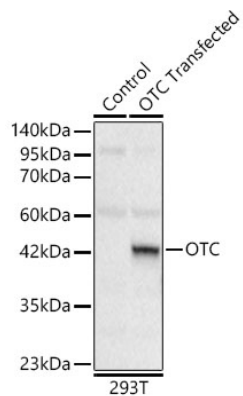
Affinity purification

Storage

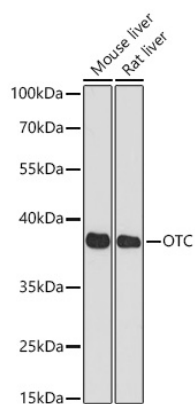
Store at -20°C. Avoid freeze / thaw cycles.

Buffer: PBS with 0.02% sodium azide, 50% glycerol, pH7.3.

Validation Data



Western blot analysis of lysates from wild type (WT) and 293T cells transfected with OTC using OTC Rabbit pAb (A9834) at 1:2000 dilution.
Secondary antibody: HRP Goat Anti-Rabbit IgG (H+L) (AS014) at 1:10000 dilution.
Lysates/proteins: 25ug per lane.
Blocking buffer: 3% nonfat dry milk in TBST.
Detection: ECL Basic Kit (RM00020).
Exposure time: 10s.



Western blot analysis of various lysates, using OTC Rabbit pAb (A9834) at 1:2000 dilution.
Secondary antibody: HRP Goat Anti-Rabbit IgG (H+L) (AS014) at 1:10000 dilution.
Lysates/proteins: 25ug per lane.
Blocking buffer: 3% nonfat dry milk in TBST.
Detection: ECL Basic Kit (RM00020).
Exposure time: 10s.