

RPE65 Rabbit pAb

Catalog No.: A9841 **2 Publications**

Basic Information

Observed MW

65kDa

Calculated MW

61kDa

Category

Primary antibody

Applications

ELISA, WB, IF/ICC

Cross-Reactivity

Human, Mouse, Rat

Background

The protein encoded by this gene is a component of the vitamin A visual cycle of the retina which supplies the 11-cis retinal chromophore of the photoreceptors opsin visual pigments. It is a member of the carotenoid cleavage oxygenase superfamily. All members of this superfamily are non-heme iron oxygenases with a seven-bladed propeller fold and oxidatively cleave carotenoid carbon:carbon double bonds. However, the protein encoded by this gene has acquired a divergent function that involves the concerted O-alkyl ester cleavage of its all-trans retinyl ester substrate and all-trans to 11-cis double bond isomerization of the retinyl moiety. As such, it performs the essential enzymatic isomerization step in the synthesis of 11-cis retinal. Mutations in this gene are associated with early-onset severe blinding disorders such as Leber congenital.

Recommended Dilutions

WB	1:1000 - 1:5000
IF/ICC	1:50 - 1:200

Immunogen Information

Gene ID

6121

Swiss Prot

Q16518

Immunogen

Recombinant fusion protein containing a sequence corresponding to amino acids 274-533 of human RPE65 (NP_000320.1).

Synonyms

p63; BCO3; LCA2; RP20; rd12; mRPE65; sRPE65; RPE65

Contact

☎ | 400-999-6126

✉ | cn.market@abclonal.com.cn

🌐 | www.abclonal.com.cn

Product Information

Source

Rabbit

Isotype

IgG

Purification

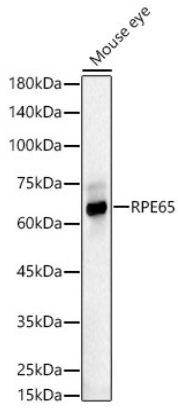
Affinity purification

Storage

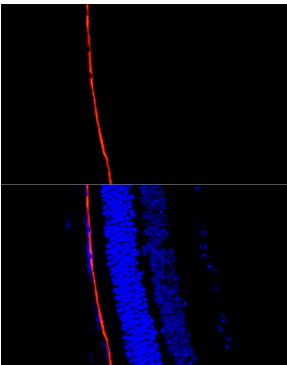
Store at -20°C. Avoid freeze / thaw cycles.

Buffer: PBS with 0.02% sodium azide, 50% glycerol, pH7.3.

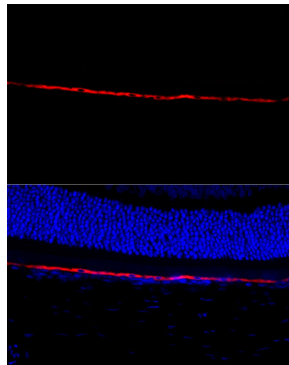
Validation Data



Western blot analysis of lysates from Mouse eye, using RPE65 Rabbit pAb (A9841) at 1:3000 dilution.
Secondary antibody: HRP Goat Anti-Rabbit IgG (H+L) (AS014) at 1:10000 dilution.
Lysates/proteins: 25µg per lane.
Blocking buffer: 3% nonfat dry milk in TBST.
Detection: ECL Basic Kit (RM00020).
Exposure time: 30s.



Perform microwave antigen retrieval with 10 mM citrate buffer pH 6.0 before commencing with IF staining protocol. Immunofluorescence analysis of paraffin-embedded mouse retina using RPE65 Rabbit pAb (A9841) at dilution of 1:300 (40x lens). Secondary antibody: Cy3 Goat Anti-Rabbit IgG (H+L) (AS007) at 1:500 dilution. Blue: DAPI for nuclear staining.



Perform microwave antigen retrieval with 10 mM citrate buffer pH 6.0 before commencing with IF staining protocol. Immunofluorescence analysis of paraffin-embedded rat retina using RPE65 Rabbit pAb (A9841) at dilution of 1:300 (40x lens). Secondary antibody: Cy3 Goat Anti-Rabbit IgG (H+L) (AS007) at 1:500 dilution. Blue: DAPI for nuclear staining.