

# FBP2 Rabbit pAb

Catalog No.: A9850

## Basic Information

### Observed MW

36kDa

### Calculated MW

37kDa

### Category

Primary antibody

### Applications

ELISA, WB, IF/ICC

### Cross-Reactivity

Mouse, Rat

## Background

This gene encodes a gluconeogenesis regulatory enzyme which catalyzes the hydrolysis of fructose 1,6-bisphosphate to fructose 6-phosphate and inorganic phosphate.

## Recommended Dilutions

WB 1:500 - 1:2000

IF/ICC 1:50 - 1:200

## Immunogen Information

### Gene ID

8789

### Swiss Prot

O00757

### Immunogen

Recombinant fusion protein containing a sequence corresponding to amino acids 1-339 of human FBP2 (NP\_003828.2).

### Synonyms

CORLK; FBP2

## Contact

☎ | 400-999-6126

✉ | [cn.market@abclonal.com.cn](mailto:cn.market@abclonal.com.cn)

🌐 | [www.abclonal.com.cn](http://www.abclonal.com.cn)

## Product Information

### Source

Rabbit

### Isotype

IgG

### Purification

Affinity purification

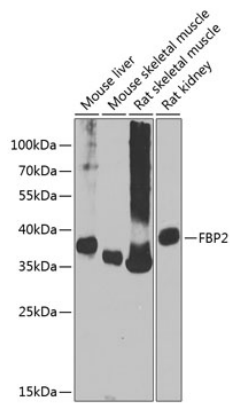
### Storage

Store at -20°C. Avoid freeze / thaw cycles.

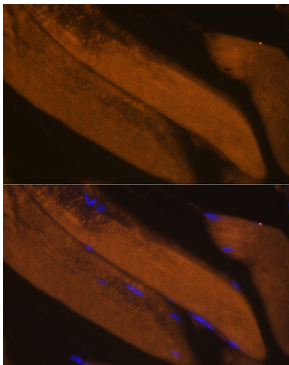
Buffer: PBS with 0.02% sodium azide, 50% glycerol, pH7.3.

## Validation Data

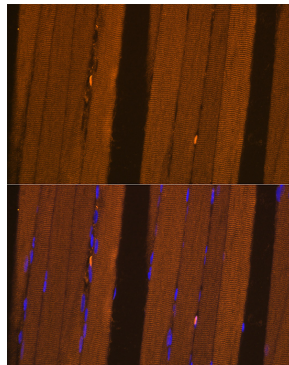
---



Western blot analysis of extracts of various cell lines, using FBP2 antibody (A9850) at 1:1000 dilution.  
Secondary antibody: HRP Goat Anti-Rabbit IgG (H+L) (AS014) at 1:10000 dilution.  
Lysates/proteins: 25µg per lane.  
Blocking buffer: 3% nonfat dry milk in TBST.  
Detection: ECL Basic Kit (RM00020).  
Exposure time: 90s.



Immunofluorescence analysis of Mouse skeletal muscle using FBP2 antibody (A9850) at dilution of 1:100. Blue: DAPI for nuclear staining.



Immunofluorescence analysis of Rat skeletal muscle using FBP2 antibody (A9850) at dilution of 1:100. Blue: DAPI for nuclear staining.