

BAZ1A Rabbit pAb

Catalog No.: A9866

Basic Information

Observed MW

250kDa

Calculated MW

179kDa

Category

Primary antibody

Applications

ELISA, WB

Cross-Reactivity

Human, Mouse, Rat

Background

The BAZ1A gene encodes the accessory subunit of the ATP-dependent chromatin assembly factor (ACF), a member of the ISWI ('imitation switch') family of chromatin remodeling complexes (summarized by Racki et al., 2009 [PubMed 20033039]).

Recommended Dilutions

WB 1:500 - 1:2000

Immunogen Information

Gene ID

11177

Swiss Prot

Q9NRL2

Immunogen

Recombinant fusion protein containing a sequence corresponding to amino acids 1347-1556 of human BAZ1A (NP_038476.2).

Synonyms

ACF1; WALp1; hACF1; WCRF180; BAZ1A

Contact

☎ | 400-999-6126

✉ | cn.market@abclonal.com.cn

🌐 | www.abclonal.com.cn

Product Information

Source

Rabbit

Isotype

IgG

Purification

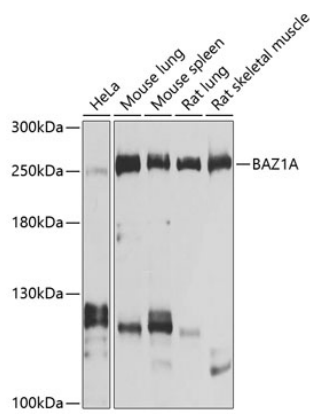
Affinity purification

Storage

Store at -20°C. Avoid freeze / thaw cycles.

Buffer: PBS with 0.02% sodium azide, 50% glycerol, pH7.3.

Validation Data



Western blot analysis of extracts of various cell lines, using BAZ1A antibody (A9866) at 1:1000 dilution.
Secondary antibody: HRP Goat Anti-Rabbit IgG (H+L) (AS014) at 1:10000 dilution.
Lysates/proteins: 25µg per lane.
Blocking buffer: 3% nonfat dry milk in TBST.
Detection: ECL Basic Kit (RM00020).
Exposure time: 1s.