

PAM16 Rabbit pAb

Catalog No.: A9875

Basic Information

Observed MW

14kDa

Calculated MW

14kDa

Category

Primary antibody

Applications

ELISA, WB

Cross-Reactivity

Human, Mouse

Background

This gene encodes a mitochondrial protein involved in granulocyte-macrophage colony-stimulating factor (GM-CSF) signaling. This protein also plays a role in the import of nuclear-encoded mitochondrial proteins into the mitochondrial matrix and may be important in reactive oxygen species (ROS) homeostasis. Mutations in this gene cause Megarbane-Dagher-Melike type spondylometaphyseal dysplasia, an early lethal skeletal dysplasia characterized by short stature, developmental delay and other skeletal abnormalities.

Recommended Dilutions

WB 1:500 - 1:2000

Immunogen Information

Gene ID

51025

Swiss Prot

Q9Y3D7

Immunogen

Recombinant fusion protein containing a sequence corresponding to amino acids 21-125 of human PAM16 (NP_057153.8).

Synonyms

TIM16; MAGMAS; SMDMDM; TIMM16; CGI-136; PAM16

Contact

 | 400-999-6126

 | cn.market@abclonal.com.cn

 | www.abclonal.com.cn

Product Information

Source

Rabbit

Isotype

IgG

Purification

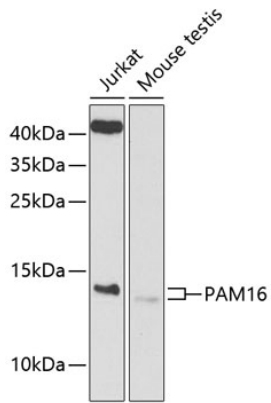
Affinity purification

Storage

Store at -20°C. Avoid freeze / thaw cycles.

Buffer: PBS with 0.02% sodium azide, 50% glycerol, pH 7.3.

Validation Data



Western blot analysis of extracts of various cell lines, using PAM16 antibody (A9875) at 1:1000 dilution.
Secondary antibody: HRP Goat Anti-Rabbit IgG (H+L) (AS014) at 1:10000 dilution.
Lysates/proteins: 25µg per lane.
Blocking buffer: 3% nonfat dry milk in TBST.
Detection: ECL Basic Kit (RM00020).
Exposure time: 90s.