

Mitofusin-1/MFN1 Rabbit pAb

Catalog No.: A9880SP

Basic Information

Observed MW

84 kDa

Calculated MW

84 kDa/83 kDa/42 kDa/71 kDa

Category

Primary antibody

Applications

WB, IHC-P, ELISA

Cross-Reactivity

Human, Mouse, Rat

Background

The protein encoded by this gene is a mediator of mitochondrial fusion. This protein and mitofusin 2 are homologs of the Drosophila protein fuzzy onion (Fzo). They are mitochondrial membrane proteins that interact with each other to facilitate mitochondrial targeting.

Recommended Dilutions

WB 1:1000 - 1:2000

IHC-P 1:100 - 1:400

ELISA Recommended starting concentration is 1 µg/mL. Please optimize the concentration based on your specific assay requirements. For high-ratio antibody dilutions ($\geq 1:10000$) a sequential dilution method is strongly recommended to ensure measurement accuracy.

Immunogen Information

Gene ID

55669/67414

Swiss Prot

Q8IWA4/Q811U4

Immunogen

This information is considered to be commercially sensitive.

Synonyms

hfzo1; hfzo2; Mitofusin-1/MFN1; HR2; mKIAA4032; D3ErtD265e; 2310002F04Rik; 6330416C07Rik; MFN1

Product Information

Source

Rabbit

Isotype

IgG

Purification

Affinity purification

Storage

Store at -20°C. Avoid freeze / thaw cycles.

Buffer: PBS, pH 7.3, containing 50% glycerol. Preserved with Proclin300 or sodium azide.

May contain 0.05% BSA as specified on the Certificate of Analysis.

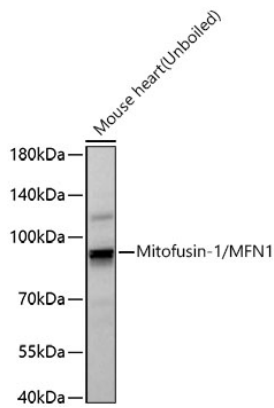
Contact

☎ | 400-999-6126

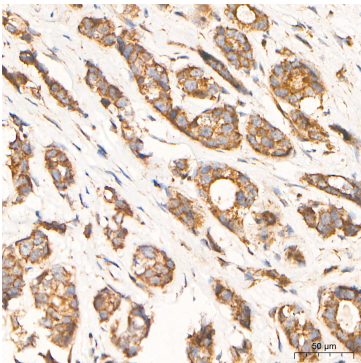
✉ | cn.market@abclonal.com.cn

🌐 | www.abclonal.com.cn

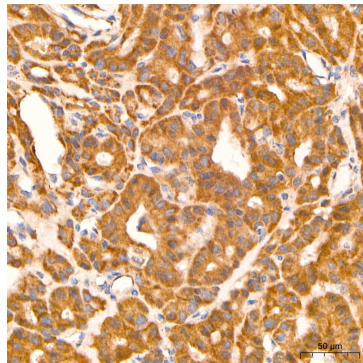
Validation Data



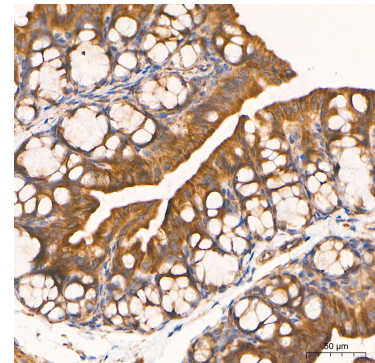
Western blot analysis of lysates from Mouse heart using Mitofusin-1/MFN1 Rabbit pAb (A9880SP) at 1:1000 dilution incubated at room temperature for 1.5 hours.
Secondary antibody: HRP-conjugated Goat anti-Rabbit IgG (H+L) (AS014) at 1:10000 dilution.
Lysates/proteins: 25 µg per lane.
Blocking buffer: 3% nonfat dry milk in TBST.
Detection: ECL Basic Kit (RM00020).
Exposure time: 45 s.



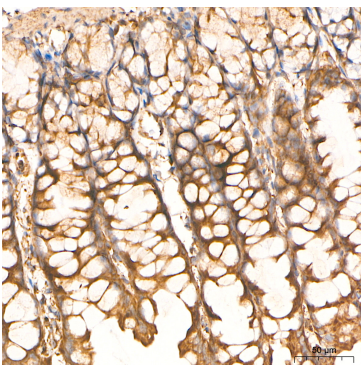
Immunohistochemistry analysis of paraffin-embedded Human breast cancer tissue using Mitofusin-1/MFN1 Rabbit pAb (A9880SP) at a dilution of 1:100 (40x lens). High pressure antigen retrieval performed with 0.01M Tris-EDTA Buffer (pH 9.0) prior to IHC staining.



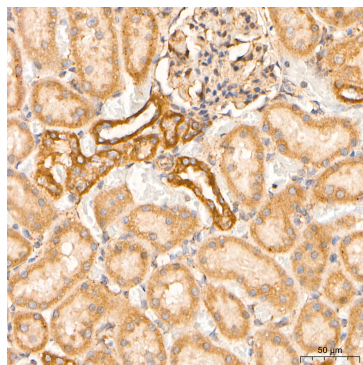
Immunohistochemistry analysis of paraffin-embedded Human thyroid cancer tissue using Mitofusin-1/MFN1 Rabbit pAb (A9880SP) at a dilution of 1:100 (40x lens). High pressure antigen retrieval performed with 0.01M Tris-EDTA Buffer (pH 9.0) prior to IHC staining.



Immunohistochemistry analysis of paraffin-embedded Mouse intestine tissue using Mitofusin-1/MFN1 Rabbit pAb (A9880SP) at a dilution of 1:100 (40x lens). High pressure antigen retrieval performed with 0.01M Tris-EDTA Buffer (pH 9.0) prior to IHC staining.



Immunohistochemistry analysis of paraffin-embedded Rat colon tissue using Mitofusin-1/MFN1 Rabbit pAb (A9880SP) at a dilution of 1:100 (40x lens). High pressure antigen retrieval performed with 0.01M Tris-EDTA Buffer (pH 9.0) prior to IHC staining.



Immunohistochemistry analysis of paraffin-embedded Rat kidney tissue using Mitofusin-1/MFN1 Rabbit pAb (A9880SP) at a dilution of 1:100 (40x lens). High pressure antigen retrieval performed with 0.01M Tris-EDTA Buffer (pH 9.0) prior to IHC staining.