

NLRP5 Rabbit pAb

Catalog No.: A9886

Basic Information

Observed MW

134kDa

Calculated MW

134kDa

Category

Primary antibody

Applications

ELISA, WB

Cross-Reactivity

Human, Mouse, Rat

Background

The protein encoded by this gene belongs to the NALP protein family. Members of the NALP protein family typically contain a NACHT domain, a NACHT-associated domain (NAD), a C-terminal leucine-rich repeat (LRR) region, and an N-terminal pyrin domain (PYD). Expression of this gene is restricted to the oocyte. A mouse gene that encodes a maternal oocyte protein, similar to this encoded protein, is required for normal early embryogenesis.

Recommended Dilutions

WB 1:500 - 1:2000

Immunogen Information

Gene ID

126206

Swiss Prot

P59047

Immunogen

Recombinant fusion protein containing a sequence corresponding to amino acids 157-256 of human NLRP5 (NP_703148.4).

Synonyms

MATER; NALP5; PAN11; PYPAF8; CLR19.8; NLRP5

Contact

 | 400-999-6126

 | cn.market@abclonal.com.cn

 | www.abclonal.com.cn

Product Information

Source

Rabbit

Isotype

IgG

Purification

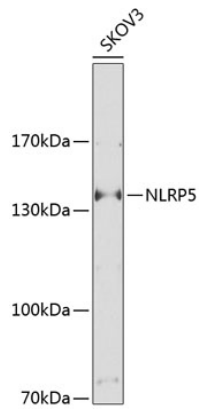
Affinity purification

Storage

Store at -20°C. Avoid freeze / thaw cycles.

Buffer: PBS with 0.02% sodium azide, 50% glycerol, pH 7.3.

Validation Data



Western blot analysis of extracts of SKOV3 cells, using NLRP5 Antibody (A9886) at 1:1000 dilution.
Secondary antibody: HRP Goat Anti-Rabbit IgG (H+L) (AS014) at 1:10000 dilution.
Lysates/proteins: 25µg per lane.
Blocking buffer: 3% nonfat dry milk in TBST.
Detection: ECL Basic Kit (RM00020).
Exposure time: 20S.