

RPP25L Rabbit pAb

Catalog No.: A9889

Basic Information

Observed MW

18kDa

Calculated MW

18kDa

Category

Primary antibody

Applications

WB, ELISA

Cross-Reactivity

Mouse

Background

This gene encodes a protein that appears to belong to a family of evolutionarily related proteins (DUF78), that may share one or more domains in common. Members of this family are small archaeobacterial proteins with no known function. Alternative splicing has been observed at this locus and two variants, both encoding the same protein, have been identified.

Recommended Dilutions

WB 1:500 - 1:2000

ELISA Recommended starting concentration is 1 µg/mL. Please optimize the concentration based on your specific assay requirements.

Immunogen Information

Gene ID

138716

Swiss Prot

Q8N5L8

Immunogen

Recombinant protein (or fragment). This information is considered to be commercially sensitive.

Synonyms

C9orf23; bA296L22.5; RPP25L

Contact

☎ | 400-999-6126

✉ | cn.market@abclonal.com.cn

🌐 | www.abclonal.com.cn

Product Information

Source

Rabbit

Isotype

IgG

Purification

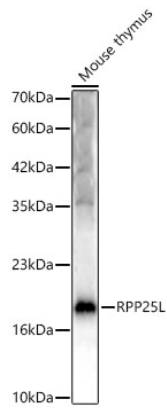
Affinity purification

Storage

Store at -20°C. Avoid freeze / thaw cycles.

Buffer: PBS containing 50% glycerol, preserved with proclin300 or sodium azide (as specified on the Certificate of Analysis), pH 7.3.

Validation Data



Western blot analysis of lysates from Mouse thymus, using RPP25L Rabbit pAb (A9889) at 1:400 dilution.
Secondary antibody: HRP-conjugated Goat anti-Rabbit IgG (H+L) (AS014) at 1:10000 dilution.
Lysates/proteins: 25µg per lane.
Blocking buffer: 3% nonfat dry milk in TBST.
Detection: ECL Enhanced Kit (RM00021).
Exposure time: 60s.