

MAN2B1 Rabbit pAb

Catalog No.: A9937

Basic Information

Observed MW

170kDa

Calculated MW

114kDa

Category

Primary antibody

Applications

WB, ELISA

Cross-Reactivity

Mouse

Background

This gene encodes an enzyme that hydrolyzes terminal, non-reducing alpha-D-mannose residues in alpha-D-mannosides. Its activity is necessary for the catabolism of N-linked carbohydrates released during glycoprotein turnover and it is member of family 38 of glycosyl hydrolases. The full length protein is processed in two steps. First, a 49 aa leader sequence is cleaved off and the remainder of the protein is processed into 3 peptides of 70 kDa, 42 kDa (D) and 13/15 kDa (E). Next, the 70 kDa peptide is further processed into three peptides (A, B and C). The A, B and C peptides are disulfide-linked. Defects in this gene have been associated with lysosomal alpha-mannosidosis. Alternatively spliced transcript variants encoding different isoforms have been found for this gene.

Recommended Dilutions

WB 1:500 - 1:2000

ELISA Recommended starting concentration is 1 µg/mL. Please optimize the concentration based on your specific assay requirements.

Immunogen Information

Gene ID

4125

Swiss Prot

O00754

Immunogen

Recombinant protein (or fragment). This information is considered to be commercially sensitive.

Synonyms

MANB; LAMAN; MAN2B1

Contact

☎ | 400-999-6126

✉ | cn.market@abclonal.com.cn

🌐 | www.abclonal.com.cn

Product Information

Source

Rabbit

Isotype

IgG

Purification

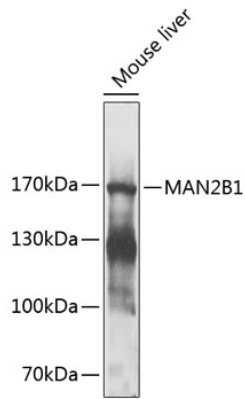
Affinity purification

Storage

Store at -20°C. Avoid freeze / thaw cycles.

Buffer: PBS containing 50% glycerol, preserved with proclin300 or sodium azide (as specified on the Certificate of Analysis), pH 7.3.

Validation Data



Western blot analysis of lysates from mouse liver, using MAN2B1 Rabbit pAb (A9937) at 1:1000 dilution.
Secondary antibody: HRP-conjugated Goat anti-Rabbit IgG (H+L) (AS014) at 1:10000 dilution.
Lysates/proteins: 25 μ g per lane.
Blocking buffer: 3% nonfat dry milk in TBST.
Detection: ECL Enhanced Kit (RM00021).
Exposure time: 30s.