

MT-CO3 Rabbit pAb

Catalog No.: A9939 **3 Publications**

Basic Information

Observed MW

30kDa

Calculated MW

29kDa

Category

Primary antibody

Applications

ELISA, WB

Cross-Reactivity

Mouse, Rat

Background

Predicted to enable electron transfer activity and oxidoreduction-driven active transmembrane transporter activity. Predicted to be involved in mitochondrial electron transport, cytochrome c to oxygen and respiratory chain complex IV assembly. Located in mitochondrion. Is expressed in several structures, including alimentary system; brain; heart; integumental system; and sensory organ. Human ortholog(s) of this gene implicated in MELAS syndrome. Orthologous to human MT-CO3 (mitochondrially encoded cytochrome c oxidase III).

Recommended Dilutions

WB 1:500 - 1:2000

Immunogen Information

Gene ID

17710

Swiss Prot

Immunogen

A synthetic peptide corresponding to a sequence within amino acids 1-100 of mouse MT-CO3 (NP_904334.1).

Synonyms

COX3; MT-CO3

Contact

☎ | 400-999-6126

✉ | cn.market@abclonal.com.cn

🌐 | www.abclonal.com.cn

Product Information

Source

Rabbit

Isotype

IgG

Purification

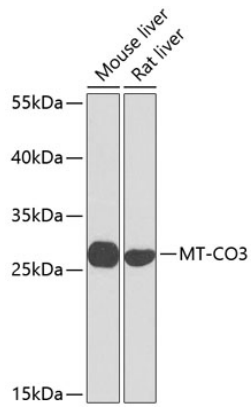
Affinity purification

Storage

Store at -20°C. Avoid freeze / thaw cycles.

Buffer: PBS with 0.02% sodium azide, 50% glycerol, pH 7.3.

Validation Data



Western blot analysis of extracts of various cell lines, using MT-CO3 antibody (A9939) at 1:1000 dilution.
Secondary antibody: HRP Goat Anti-Rabbit IgG (H+L) (AS014) at 1:10000 dilution.
Lysates/proteins: 25µg per lane.
Blocking buffer: 3% nonfat dry milk in TBST.
Detection: ECL Basic Kit (RM00020).
Exposure time: 30s.