

MT-ND3 Rabbit pAb

Catalog No.: A9940 **1 Publications**

Basic Information

Observed MW

13kDa

Calculated MW

13kDa

Category

Primary antibody

Applications

ELISA, WB

Cross-Reactivity

Human, Mouse, Rat

Background

Predicted to enable NADH dehydrogenase (ubiquinone) activity. Predicted to be involved in cellular response to glucocorticoid stimulus; mitochondrial electron transport, NADH to ubiquinone; and response to oxidative stress. Located in mitochondrion. Is expressed in several structures, including alimentary system; brain; genitourinary system; hemolymphoid system gland; and liver and biliary system. Human ortholog(s) of this gene implicated in Leber hereditary optic neuropathy; Leigh disease; and Parkinson's disease. Orthologous to human MT-ND3 (mitochondrially encoded NADH:ubiquinone oxidoreductase core subunit 3).

Recommended Dilutions

WB 1:500 - 1:2000

Immunogen Information

Gene ID

17718

Swiss Prot

Immunogen

A synthetic peptide corresponding to a sequence within amino acids 1-100 of mouse MT-ND3 (NP_904335.1).

Synonyms

ND3; MT-ND3

Contact

 | 400-999-6126

 | cn.market@abclonal.com.cn

 | www.abclonal.com.cn

Product Information

Source

Rabbit

Isotype

IgG

Purification

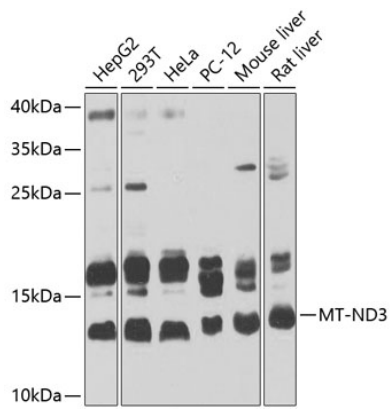
Affinity purification

Storage

Store at -20°C. Avoid freeze / thaw cycles.

Buffer: PBS with 0.02% sodium azide, 50% glycerol, pH 7.3.

Validation Data



Western blot analysis of extracts of various cell lines, using MT-ND3 Antibody (A9940) at 1:1000 dilution.
Secondary antibody: HRP Goat Anti-Rabbit IgG (H+L) (AS014) at 1:10000 dilution.
Lysates/proteins: 25µg per lane.
Blocking buffer: 3% nonfat dry milk in TBST.
Detection: ECL Basic Kit (RM00020).
Exposure time: 30s.