

MT-ND4 Rabbit pAb

Catalog No.: A9941 **15 Publications**

Basic Information

Observed MW

51 kDa

Calculated MW

51 kDa

Category

Primary antibody

Applications

WB, ELISA

Cross-Reactivity

Human, Mouse, Rat

Background

Predicted to enable NADH dehydrogenase (ubiquinone) activity and ubiquinone binding activity. Predicted to contribute to NADH dehydrogenase activity. Predicted to be involved in several processes, including electron transport coupled proton transport; mitochondrial electron transport, NADH to ubiquinone; and mitochondrial respiratory chain complex I assembly. Located in mitochondrion. Human ortholog(s) of this gene implicated in Leber hereditary optic neuropathy; Parkinson's disease; macular degeneration; and schizophrenia. Orthologous to human MT-ND4 (mitochondrially encoded NADH:ubiquinone oxidoreductase core subunit 4).

Recommended Dilutions

WB 1:500 - 1:2000

ELISA Recommended starting concentration is 1 µg/mL. Please optimize the concentration based on your specific assay requirements.

Immunogen Information

Gene ID

17719

Swiss Prot

Immunogen

Synthetic peptide. This information is considered to be commercially sensitive.

Synonyms

ND4; MT-ND4

Contact

☎ | 400-999-6126

✉ | cn.market@abclonal.com.cn

🌐 | www.abclonal.com.cn

Product Information

Source

Rabbit

Isotype

IgG

Purification

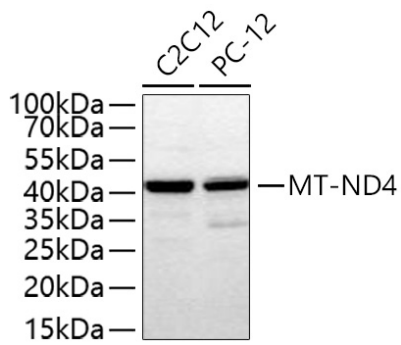
Affinity purification

Storage

Store at -20°C. Avoid freeze / thaw cycles.

Buffer: PBS containing 50% glycerol, preserved with proclin300 or sodium azide (as specified on the Certificate of Analysis), pH 7.3.

Validation Data



Western blot analysis of various lysates using MT-ND4 Rabbit pAb (A9941) at 1:1000 dilution incubated at room temperature for 1.5 hours.
Secondary antibody: HRP-conjugated Goat anti-Rabbit IgG (H+L) (AS014) at 1:10000 dilution.
Lysates/proteins: 25 µg per lane.
Blocking buffer: 3% nonfat dry milk in TBST.
Detection: ECL Basic Kit (RM00020).
Exposure time: 20 s.