

SUPV3L1 Rabbit pAb

Catalog No.: A9951 **1 Publications**

Basic Information

Observed MW

88kDa

Calculated MW

88kDa

Category

Primary antibody

Applications

ELISA, WB, IF/ICC

Cross-Reactivity

Human, Mouse, Rat

Background

Enables helicase activity; nucleic acid binding activity; and protein homodimerization activity. Involved in several processes, including mitochondrial RNA metabolic process; mitochondrion morphogenesis; and positive regulation of mitochondrial RNA catabolic process. Located in mitochondrial nucleoid and nucleus. Part of mitochondrial degradosome.

Recommended Dilutions

WB	1:1000 - 1:4000
IF/ICC	1:50 - 1:200

Immunogen Information

Gene ID

6832

Swiss Prot

Q8IYB8

Immunogen

Recombinant fusion protein containing a sequence corresponding to amino acids 577-786 of human SUPV3L1 (NP_003162.2).

Synonyms

SUV3; SUPV3L1

Contact

 | 400-999-6126

 | cn.market@abclonal.com.cn

 | www.abclonal.com.cn

Product Information

Source

Rabbit

Isotype

IgG

Purification

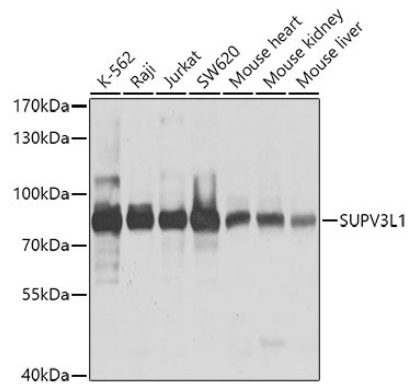
Affinity purification

Storage

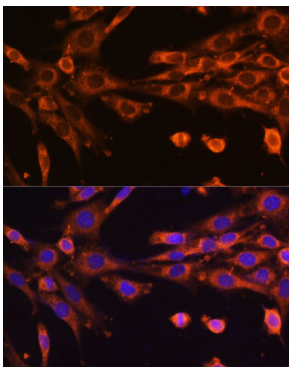
Store at -20°C. Avoid freeze / thaw cycles.

Buffer: PBS with 0.02% sodium azide, 50% glycerol, pH 7.3.

Validation Data



Western blot analysis of extracts of various cell lines, using SUPV3L1 antibody (A9951) at 1:1000 dilution. Secondary antibody: HRP Goat Anti-Rabbit IgG (H+L) (AS014) at 1:10000 dilution. Lysates/proteins: 25µg per lane. Blocking buffer: 3% nonfat dry milk in TBST. Detection: ECL Basic Kit (RM00020). Exposure time: 1s.



Immunofluorescence analysis of NIH-3T3 cells using SUPV3L1 Polyclonal Antibody (A9951) at dilution of 1:100 (40x lens). Blue: DAPI for nuclear staining.