

# SLC30A1 Rabbit pAb

Catalog No.: A9954

1 Publications

## Basic Information

### Observed MW

55kDa

### Calculated MW

55kDa

### Category

Primary antibody

### Applications

WB,IHC-P,ELISA

### Cross-Reactivity

Human, Mouse, Rat

## Background

Predicted to enable calcium channel inhibitor activity and zinc ion transmembrane transporter activity. Predicted to be involved in several processes, including cellular divalent inorganic cation homeostasis; inorganic cation transmembrane transport; and negative regulation of transport. Predicted to act upstream of or within in utero embryonic development. Located in several cellular components, including Golgi apparatus; endoplasmic reticulum; and nuclear membrane.

## Recommended Dilutions

**WB** 1:500 - 1:2000

**IHC-P** 1:50 - 1:200

**ELISA** Recommended starting concentration is 1 µg/mL. Please optimize the concentration based on your specific assay requirements.

## Immunogen Information

### Gene ID

7779

### Swiss Prot

Q9Y6M5

### Immunogen

A synthetic peptide corresponding to a sequence within amino acids 328-507 of human SLC30A1 (NP\_067017.2).

### Synonyms

ZNT1; ZRC1; SLC30A1

## Contact

☎ | 400-999-6126

✉ | [cn.market@abclonal.com.cn](mailto:cn.market@abclonal.com.cn)

🌐 | [www.abclonal.com.cn](http://www.abclonal.com.cn)

## Product Information

### Source

Rabbit

### Isotype

IgG

### Purification

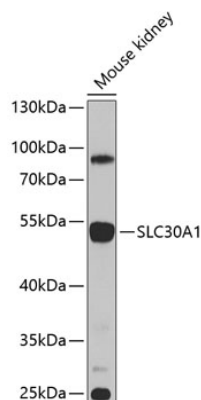
Affinity purification

### Storage

Store at -20°C. Avoid freeze / thaw cycles.

Buffer: PBS with 0.02% sodium azide, 50% glycerol, pH7.3.

## Validation Data



Western blot analysis of lysates from mouse kidney, using SLC30A1 Rabbit pAb (A9954) at 1:1000 dilution.

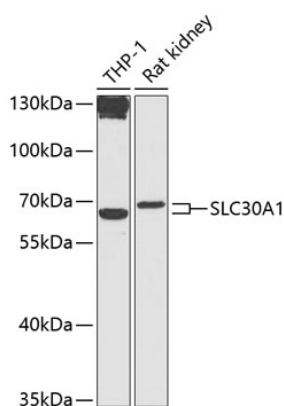
Secondary antibody: HRP-conjugated Goat anti-Rabbit IgG (H+L) (AS014) at 1:10000 dilution.

Lysates/proteins: 25µg per lane.

Blocking buffer: 3% nonfat dry milk in TBST.

Detection: ECL Enhanced Kit (RM00021).

Exposure time: 60s.



Western blot analysis of various lysates using SLC30A1 Rabbit pAb (A9954) at 1:1000 dilution.

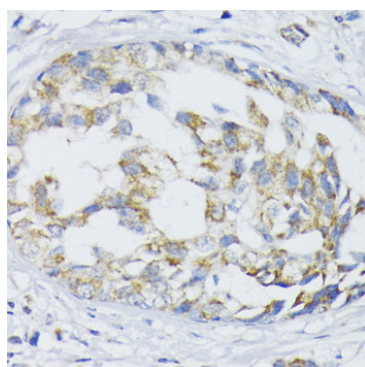
Secondary antibody: HRP-conjugated Goat anti-Rabbit IgG (H+L) (AS014) at 1:10000 dilution.

Lysates/proteins: 25µg per lane.

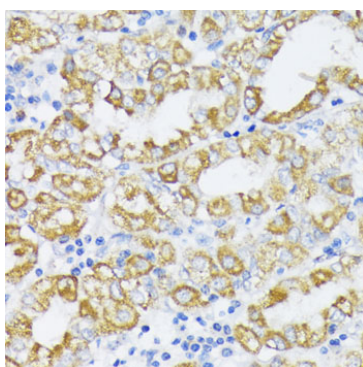
Blocking buffer: 3% nonfat dry milk in TBST.

Detection: ECL Basic Kit (RM00020).

Exposure time: 90s.



Immunohistochemistry analysis of paraffin-embedded Human mammary cancer using SLC30A1 Rabbit pAb (A9954) at dilution of 1:100 (40x lens). Microwave antigen retrieval performed with 0.01M PBS Buffer (pH 7.2) prior to IHC staining.



Immunohistochemistry analysis of paraffin-embedded Human stomach using SLC30A1 Rabbit pAb (A9954) at dilution of 1:100 (40x lens). Microwave antigen retrieval performed with 0.01M PBS Buffer (pH 7.2) prior to IHC staining.