

PEA15 Rabbit pAb

Catalog No.: A9956

Basic Information

Observed MW

15kDa

Calculated MW

15kDa

Category

Primary antibody

Applications

ELISA, WB

Cross-Reactivity

Human, Mouse

Background

This gene encodes a death effector domain-containing protein that functions as a negative regulator of apoptosis. The encoded protein is an endogenous substrate for protein kinase C. This protein is also overexpressed in type 2 diabetes mellitus, where it may contribute to insulin resistance in glucose uptake. Alternative splicing results in multiple transcript variants.

Recommended Dilutions

WB 1:500 - 1:2000

Immunogen Information

Gene ID

8682

Swiss Prot

Q15121

Immunogen

Recombinant fusion protein containing a sequence corresponding to amino acids 1-130 of human PEA15 (NP_003759.1).

Synonyms

PED; MAT1; HMAT1; MAT1H; PEA-15; HUMMAT1H; PED-PEA15; PED/PEA15; PEA15

Contact

☎ | 400-999-6126

✉ | cn.market@abclonal.com.cn

🌐 | www.abclonal.com.cn

Product Information

Source

Rabbit

Isotype

IgG

Purification

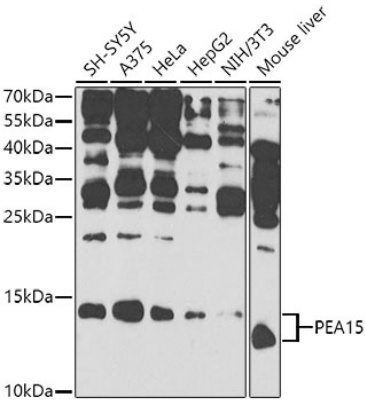
Affinity purification

Storage

Store at -20°C. Avoid freeze / thaw cycles.

Buffer: PBS with 0.02% sodium azide, 50% glycerol, pH7.3.

Validation Data



Western blot analysis of extracts of various cell lines, using PEA15 antibody (A9956) at 1:1000 dilution.
Secondary antibody: HRP Goat Anti-Rabbit IgG (H+L) (AS014) at 1:10000 dilution.
Lysates/proteins: 25µg per lane.
Blocking buffer: 3% nonfat dry milk in TBST.
Detection: ECL Basic Kit (RM00020).
Exposure time: 90s.