

FBLN5 Rabbit pAb

Catalog No.: A9961 **3 Publications**

Basic Information

Observed MW

60kDa

Calculated MW

50kDa

Category

Primary antibody

Applications

ELISA, WB, IF/ICC

Cross-Reactivity

Human, Mouse, Rat

Background

The protein encoded by this gene is a secreted, extracellular matrix protein containing an Arg-Gly-Asp (RGD) motif and calcium-binding EGF-like domains. It promotes adhesion of endothelial cells through interaction of integrins and the RGD motif. It is prominently expressed in developing arteries but less so in adult vessels. However, its expression is reinduced in balloon-injured vessels and atherosclerotic lesions, notably in intimal vascular smooth muscle cells and endothelial cells. Therefore, the protein encoded by this gene may play a role in vascular development and remodeling. Defects in this gene are a cause of autosomal dominant cutis laxa, autosomal recessive cutis laxa type I (CL type I), and age-related macular degeneration type 3 (ARMD3).

Recommended Dilutions

WB	1:500 - 1:1000
IF/ICC	1:50 - 1:100

Immunogen Information

Gene ID

10516

Swiss Prot

Q9UBX5

Immunogen

Recombinant fusion protein containing a sequence corresponding to amino acids 199-448 of human FBLN5 (NP_006320.2).

Synonyms

EVEC; UP50; ADCL2; ARMD3; CMT1H; DANCE; ARCL1A; FIBL-5; HNARMD; FBLN5

Contact

 | 400-999-6126 | cn.market@abclonal.com.cn | www.abclonal.com.cn

Product Information

Source

Rabbit

Isotype

IgG

Purification

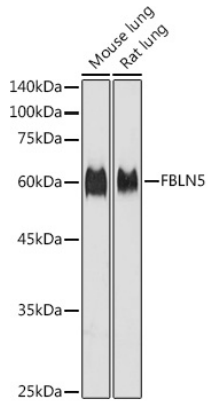
Affinity purification

Storage

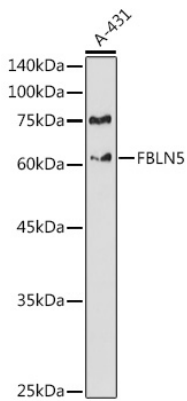
Store at -20°C. Avoid freeze / thaw cycles.

Buffer: PBS with 0.02% sodium azide, 50% glycerol, pH 7.3.

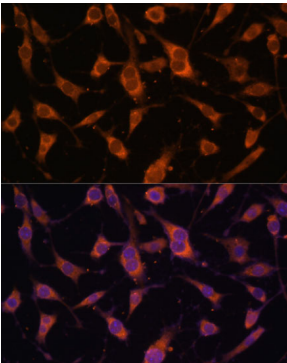
Validation Data



Western blot analysis of extracts of various cell lines, using FBLN5 antibody (A9961) at 1:1000 dilution.
Secondary antibody: HRP Goat Anti-Rabbit IgG (H+L) (AS014) at 1:10000 dilution.
Lysates/proteins: 25µg per lane.
Blocking buffer: 3% nonfat dry milk in TBST.
Detection: ECL Basic Kit (RM00020).
Exposure time: 10s.



Western blot analysis of extracts of A-431 cells, using FBLN5 antibody (A9961) at 1:1000 dilution.
Secondary antibody: HRP Goat Anti-Rabbit IgG (H+L) (AS014) at 1:10000 dilution.
Lysates/proteins: 25µg per lane.
Blocking buffer: 3% nonfat dry milk in TBST.
Detection: ECL Basic Kit (RM00020).
Exposure time: 180s.



Immunofluorescence analysis of L929 cells using FBLN5 Polyclonal Antibody (A9961) at dilution of 1:100 (40x lens). Blue: DAPI for nuclear staining.