

G0S2 Rabbit pAb

Catalog No.: A9970 **2 Publications**

Basic Information

Observed MW

11 kDa

Calculated MW

11 kDa

Category

Primary antibody

Applications

WB, ELISA

Cross-Reactivity

Mouse

Background

Involved in extrinsic apoptotic signaling pathway and positive regulation of extrinsic apoptotic signaling pathway. Located in mitochondrion.

Recommended Dilutions

WB 1:500 - 1:2000

ELISA Recommended starting concentration is 1 µg/mL. Please optimize the concentration based on your specific assay requirements.

Immunogen Information

Gene ID

50486

Swiss Prot

P27469

Immunogen

Synthetic peptide. This information is considered to be commercially sensitive.

Synonyms

G0S2

Contact

☎ | 400-999-6126

✉ | cn.market@abclonal.com.cn

🌐 | www.abclonal.com.cn

Product Information

Source

Rabbit

Isotype

IgG

Purification

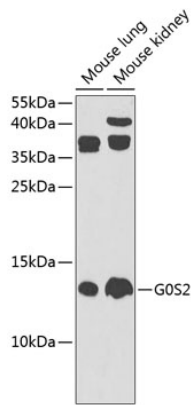
Affinity purification

Storage

Store at -20°C. Avoid freeze / thaw cycles.

Buffer: PBS containing 50% glycerol, preserved with proclin300 or sodium azide (as specified on the Certificate of Analysis), pH 7.3.

Validation Data



Western blot analysis of various lysates using G0S2 Rabbit pAb (A9970) at 1:1000 dilution.
Secondary antibody: HRP-conjugated Goat anti-Rabbit IgG (H+L) (AS014) at 1:10000 dilution.
Lysates/proteins: 25µg per lane.
Blocking buffer: 3% nonfat dry milk in TBST.
Detection: ECL Enhanced Kit (RM00021).
Exposure time: 90s.