

EIF3L Rabbit pAb

Catalog No.: A9972

Basic Information

Observed MW

67kDa

Calculated MW

67kDa

Category

Primary antibody

Applications

ELISA, WB, IHC-P

Cross-Reactivity

Human, Mouse, Rat

Background

Enables RNA binding activity. Contributes to translation initiation factor activity. Involved in translational initiation and viral translational termination-reinitiation. Located in membrane. Part of eukaryotic translation initiation factor 3 complex.

Recommended Dilutions

WB 1:1000 - 1:4000

IHC-P 1:50 - 1:200

Immunogen Information

Gene ID

51386

Swiss Prot

Q9Y262

Immunogen

Recombinant fusion protein containing a sequence corresponding to amino acids 1-230 of human EIF3L (NP_057175.1).

Synonyms

EIF3EIP; EIF3S11; HSPC021; HSPC025; MSTP005; EIF3S6IP; EIF3L

Contact

☎ | 400-999-6126

✉ | cn.market@abclonal.com.cn

🌐 | www.abclonal.com.cn

Product Information

Source

Rabbit

Isotype

IgG

Purification

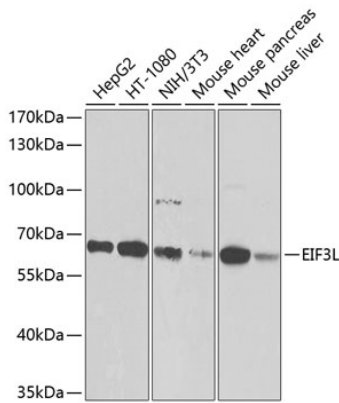
Affinity purification

Storage

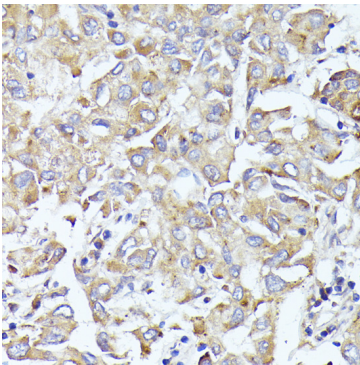
Store at -20°C. Avoid freeze / thaw cycles.

Buffer: PBS with 0.02% sodium azide, 50% glycerol, pH 7.3.

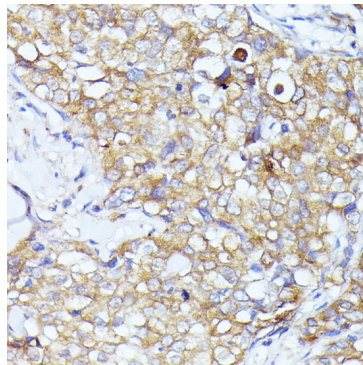
Validation Data



Western blot analysis of various lysates using EIF3L Rabbit pAb (A9972) at 1:1000 dilution. Secondary antibody: HRP Goat Anti-Rabbit IgG (H+L) (AS014) at 1:10000 dilution. Lysates/proteins: 25µg per lane. Blocking buffer: 3% nonfat dry milk in TBST. Detection: ECL Basic Kit (RM00020). Exposure time: 5s.



Immunohistochemistry analysis of paraffin-embedded Human liver cancer using EIF3L Rabbit pAb (A9972) at dilution of 1:100 (40x lens). Perform microwave antigen retrieval with 10 mM PBS buffer pH 7.2 before commencing with IHC staining protocol.



Immunohistochemistry analysis of paraffin-embedded Human mammary cancer using EIF3L Rabbit pAb (A9972) at dilution of 1:100 (40x lens). Perform microwave antigen retrieval with 10 mM PBS buffer pH 7.2 before commencing with IHC staining protocol.