

RPP25 Rabbit pAb

Catalog No.: A9973

Basic Information

Observed MW

20kDa

Calculated MW

21kDa

Category

Primary antibody

Applications

ELISA, WB, IHC-P

Cross-Reactivity

Human, Mouse

Background

Enables ribonuclease P RNA binding activity. Contributes to ribonuclease P activity. Involved in tRNA 5'-leader removal. Located in centriolar satellite and nucleoplasm. Part of multimeric ribonuclease P complex and ribonuclease MRP complex. Biomarker of autistic disorder.

Recommended Dilutions

WB 1:500 - 1:2000

IHC-P 1:50 - 1:200

Immunogen Information

Gene ID

54913

Swiss Prot

Q9BUL9

Immunogen

Recombinant fusion protein containing a sequence corresponding to amino acids 1-199 of human RPP25 (NP_060263.2).

Synonyms

RPP25

Contact

☎ | 400-999-6126

✉ | cn.market@abclonal.com.cn

🌐 | www.abclonal.com.cn

Product Information

Source

Rabbit

Isotype

IgG

Purification

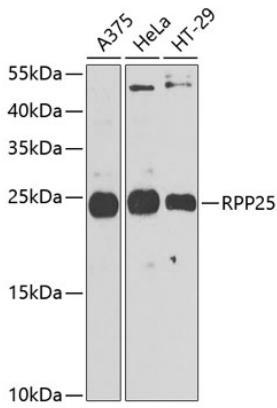
Affinity purification

Storage

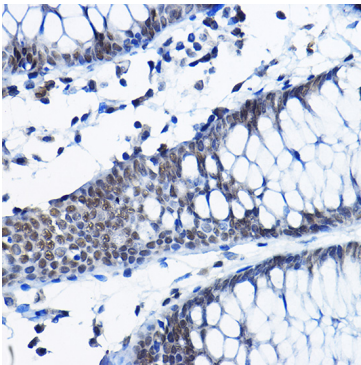
Store at -20°C. Avoid freeze / thaw cycles.

Buffer: PBS with 0.02% sodium azide, 50% glycerol, pH 7.3.

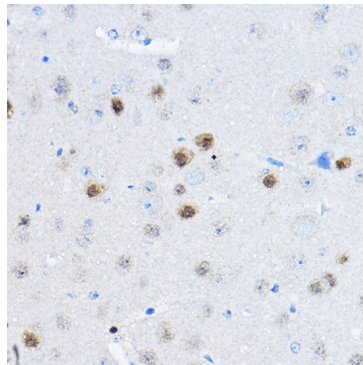
Validation Data



Western blot analysis of various lysates using RPP25 Rabbit pAb (A9973) at 1:1000 dilution.
Secondary antibody: HRP Goat Anti-Rabbit IgG (H+L) (AS014) at 1:10000 dilution.
Lysates/proteins: 25µg per lane.
Blocking buffer: 3% nonfat dry milk in TBST.
Detection: ECL Enhanced Kit (RM00021).
Exposure time: 90s.



Immunohistochemistry analysis of paraffin-embedded Human colon using RPP25 Rabbit pAb (A9973) at dilution of 1:100 (40x lens). Perform high pressure antigen retrieval with 10 mM citrate buffer pH 6.0 before commencing with IHC staining protocol.



Immunohistochemistry analysis of paraffin-embedded Mouse brain using RPP25 Rabbit pAb (A9973) at dilution of 1:100 (40x lens). Perform high pressure antigen retrieval with 10 mM citrate buffer pH 6.0 before commencing with IHC staining protocol.