

DET1 Rabbit pAb

Catalog No.: A9974 **1 Publications**

Basic Information

Observed MW

55kDa

Calculated MW

64kDa

Category

Primary antibody

Applications

ELISA, WB

Cross-Reactivity

Human, Mouse, Rat

Background

Enables ubiquitin ligase-substrate adaptor activity and ubiquitin protein ligase binding activity. Involved in positive regulation of proteasomal ubiquitin-dependent protein catabolic process; protein ubiquitination; and protein-containing complex assembly. Part of Cul4A-RING E3 ubiquitin ligase complex.

Recommended Dilutions

WB 1:500 - 1:2000

Immunogen Information

Gene ID

55070

Swiss Prot

Q7L5Y6

Immunogen

Recombinant fusion protein containing a sequence corresponding to amino acids 15-240 of human DET1 (NP_060466.2).

Synonyms

DET1

Contact

 | 400-999-6126

 | cn.market@abclonal.com.cn

 | www.abclonal.com.cn

Product Information

Source

Rabbit

Isotype

IgG

Purification

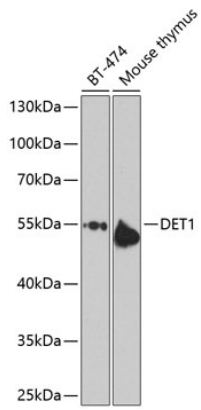
Affinity purification

Storage

Store at -20°C. Avoid freeze / thaw cycles.

Buffer: PBS with 0.02% sodium azide, 50% glycerol, pH 7.3.

Validation Data



Western blot analysis of extracts of various cell lines, using DET1 antibody (A9974) at 1:1000 dilution.
Secondary antibody: HRP Goat Anti-Rabbit IgG (H+L) (AS014) at 1:10000 dilution.
Lysates/proteins: 25µg per lane.
Blocking buffer: 3% nonfat dry milk in TBST.
Detection: ECL Enhanced Kit (RM00021).
Exposure time: 10s.