

[KO Validated] SETD7 Rabbit pAb

Catalog No.: A9985 **KO Validated** **5 Publications**

Basic Information

Observed MW

48kDa

Calculated MW

41kDa

Category

Primary antibody

Applications

ELISA, WB, IF/ICC

Cross-Reactivity

Human, Mouse, Rat

Background

Enables histone-lysine N-methyltransferase activity and p53 binding activity. Involved in peptidyl-lysine dimethylation and peptidyl-lysine monomethylation. Acts upstream of or within cellular response to DNA damage stimulus and heterochromatin organization. Located in chromosome and nucleolus.

Recommended Dilutions

WB 1:500 - 1:1000

IF/ICC 1:50 - 1:200

Immunogen Information

Gene ID

80854

Swiss Prot

Q8WTS6

Immunogen

Recombinant fusion protein containing a sequence corresponding to amino acids 1-366 of human SETD7 (NP_085151.1).

Synonyms

KMT7; SET7; SET9; SET7/9; D7

Contact

 | 400-999-6126

 | cn.market@abclonal.com.cn

 | www.abclonal.com.cn

Product Information

Source

Rabbit

Isotype

IgG

Purification

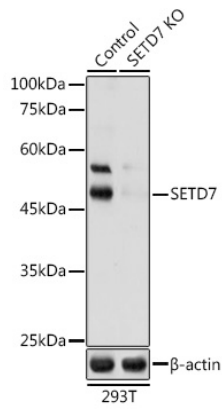
Affinity purification

Storage

Store at -20°C. Avoid freeze / thaw cycles.

Buffer: PBS with 0.02% sodium azide, 50% glycerol, pH 7.3.

Validation Data



Western blot analysis of extracts from normal (control) and SETD7 knockout (KO) 293T cells, using [KO Validated] SETD7 antibody (A9985) at 1:1000 dilution.

Secondary antibody: HRP Goat Anti-Rabbit IgG (H+L) (AS014) at 1:10000 dilution.

Lysates/proteins: 25µg per lane.

Blocking buffer: 3% nonfat dry milk in TBST.

Detection: ECL Basic Kit (RM00020).

Exposure time: 60s.