

# TIMM50 Rabbit pAb

Catalog No.: A9991

1 Publications

## Basic Information

### Observed MW

39kDa

### Calculated MW

40kDa

### Category

Primary antibody

### Applications

ELISA, WB

### Cross-Reactivity

Human, Mouse

## Background

This gene encodes a subunit of the TIM23 inner mitochondrial membrane translocase complex. The encoded protein functions as the receptor subunit that recognizes the mitochondrial targeting signal, or presequence, on protein cargo that is destined for the mitochondrial inner membrane and matrix. This protein may also play a role in maintaining the membrane permeability barrier, and knockdown of this gene in human cells results in the release of cytochrome c and apoptosis.

## Recommended Dilutions

WB 1:1000 - 1:4000

## Immunogen Information

### Gene ID

92609

### Swiss Prot

Q3ZCQ8

### Immunogen

Recombinant fusion protein containing a sequence corresponding to amino acids 190-456 of human TIMM50 (NP\_001001563.1).

### Synonyms

MGCA9; TIM50; TIM50L; TIMM50

## Contact

☎ | 400-999-6126

✉ | [cn.market@abclonal.com.cn](mailto:cn.market@abclonal.com.cn)

🌐 | [www.abclonal.com.cn](http://www.abclonal.com.cn)

## Product Information

### Source

Rabbit

### Isotype

IgG

### Purification

Affinity purification

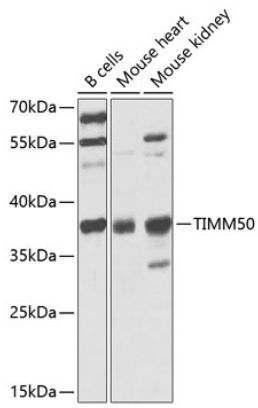
### Storage

Store at -20°C. Avoid freeze / thaw cycles.

Buffer: PBS with 0.02% sodium azide, 50% glycerol, pH 7.3.

## Validation Data

---



Western blot analysis of extracts of various cell lines, using TIMM50 antibody (A9991) at 1:1000 dilution.  
Secondary antibody: HRP Goat Anti-Rabbit IgG (H+L) (AS014) at 1:10000 dilution.  
Lysates/proteins: 25µg per lane.  
Blocking buffer: 3% nonfat dry milk in TBST.  
Detection: ECL Basic Kit (RM00020).  
Exposure time: 1s.