

# UBE2Q2 Rabbit pAb

Catalog No.: A9992

1 Publications

## Basic Information

### Observed MW

43kDa

### Calculated MW

43kDa

### Category

Primary antibody

### Applications

ELISA, WB

### Cross-Reactivity

Human, Mouse

## Background

Enables ubiquitin-protein transferase activity. Involved in protein K48-linked ubiquitination. Predicted to be located in cytosol. Predicted to be active in nucleus.

## Recommended Dilutions

WB 1:500 - 1:2000

## Immunogen Information

### Gene ID

92912

### Swiss Prot

Q8WVN8

### Immunogen

Recombinant fusion protein containing a sequence corresponding to amino acids 1-150 of human UBE2Q2 (NP\_775740.1).

### Synonyms

UBE2Q2

## Contact

☎ | 400-999-6126

✉ | [cn.market@abclonal.com.cn](mailto:cn.market@abclonal.com.cn)

🌐 | [www.abclonal.com.cn](http://www.abclonal.com.cn)

## Product Information

### Source

Rabbit

### Isotype

IgG

### Purification

Affinity purification

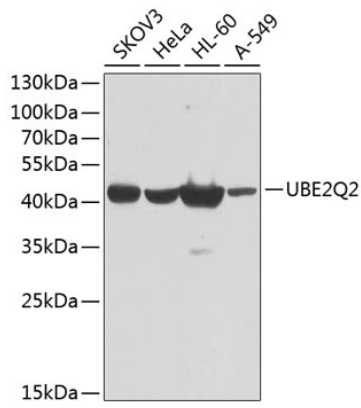
### Storage

Store at -20°C. Avoid freeze / thaw cycles.

Buffer: PBS with 0.02% sodium azide, 50% glycerol, pH7.3.

## Validation Data

---



Western blot analysis of extracts of various cell lines, using UBE2Q2 antibody (A9992) at 1:1000 dilution.  
Secondary antibody: HRP Goat Anti-Rabbit IgG (H+L) (AS014) at 1:10000 dilution.  
Lysates/proteins: 25µg per lane.  
Blocking buffer: 3% nonfat dry milk in TBST.  
Detection: ECL Basic Kit (RM00020).  
Exposure time: 60s.