

SLC2A13 Rabbit pAb

Catalog No.: A9993

Basic Information

Observed MW

73kDa

Calculated MW

70kDa

Category

Primary antibody

Applications

ELISA, WB

Cross-Reactivity

Human, Mouse, Rat

Background

Enables ATPase binding activity; myo-inositol:proton symporter activity; and protease binding activity. Involved in myo-inositol transport and positive regulation of amyloid-beta formation. Is integral component of plasma membrane. Part of cell body; cell periphery; and cell projection.

Recommended Dilutions

WB 1:1000 - 1:4000

Immunogen Information

Gene ID

114134

Swiss Prot

Q96QE2

Immunogen

Recombinant fusion protein containing a sequence corresponding to amino acids 564-648 of human SLC2A13 (NP_443117.3).

Synonyms

HMIT; SLC2A13

Contact

☎ | 400-999-6126

✉ | cn.market@abclonal.com.cn

🌐 | www.abclonal.com.cn

Product Information

Source

Rabbit

Isotype

IgG

Purification

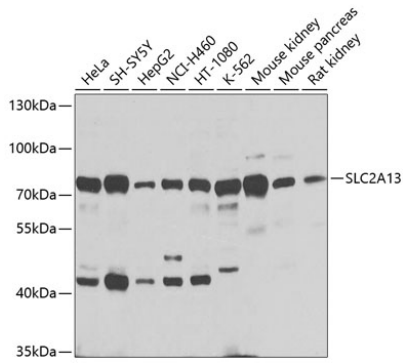
Affinity purification

Storage

Store at -20°C. Avoid freeze / thaw cycles.

Buffer: PBS with 0.02% sodium azide, 50% glycerol, pH 7.3.

Validation Data



Western blot analysis of extracts of various cell lines, using SLC2A13 antibody (A9993) at 1:1000 dilution.
Secondary antibody: HRP Goat Anti-Rabbit IgG (H+L) (AS014) at 1:10000 dilution.
Lysates/proteins: 25µg per lane.
Blocking buffer: 3% nonfat dry milk in TBST.
Detection: ECL Basic Kit (RM00020).
Exposure time: 1s.