

FRMD6 Rabbit pAb

Catalog No.: A9995

Basic Information

Observed MW

72kDa

Calculated MW

72kDa

Category

Primary antibody

Applications

WB,IHC-P,IF/ICC,ELISA

Cross-Reactivity

Human, Mouse, Rat

Background

Predicted to be involved in actomyosin structure organization. Predicted to act upstream of or within apical constriction; cellular protein localization; and regulation of actin filament-based process. Predicted to be located in apical junction complex. Predicted to be active in cytoskeleton.

Recommended Dilutions

WB 1:1000 - 1:4000

IHC-P 1:50 - 1:200

IF/ICC 1:50 - 1:200

ELISA Recommended starting concentration is 1 µg/mL. Please optimize the concentration based on your specific assay requirements.

Immunogen Information

Gene ID

122786

Swiss Prot

Q96NE9

Immunogen

A synthetic peptide corresponding to a sequence within amino acids 82-183 of human FRMD6 (NP_001253975.1).

Synonyms

EX1; Willin; C14orf31; c14_5320; FRMD6

Contact

☎ | 400-999-6126

✉ | cn.market@abclonal.com.cn

🌐 | www.abclonal.com.cn

Product Information

Source

Rabbit

Isotype

IgG

Purification

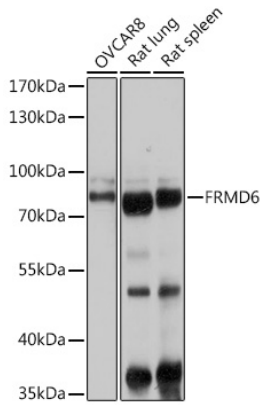
Affinity purification

Storage

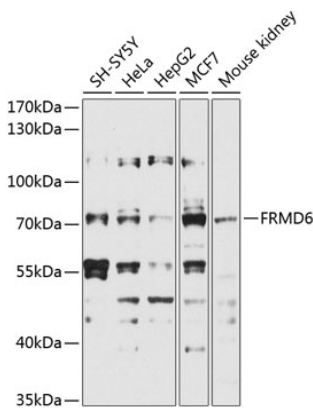
Store at -20°C. Avoid freeze / thaw cycles.

Buffer: PBS with 0.09% Sodium azide,50% glycerol,pH7.3.

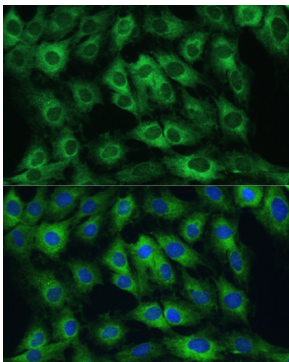
Validation Data



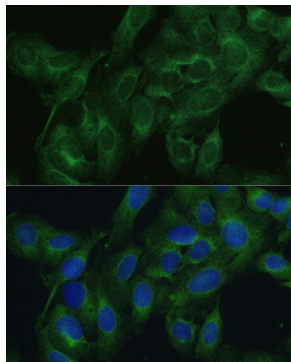
Western blot analysis of various lysates using FRMD6 Rabbit pAb (A9995) at 1:1000 dilution. Secondary antibody: HRP-conjugated Goat anti-Rabbit IgG (H+L) (AS014) at 1:10000 dilution. Lysates/proteins: 25µg per lane. Blocking buffer: 3% nonfat dry milk in TBST. Detection: ECL Basic Kit (RM00020). Exposure time: 1s.



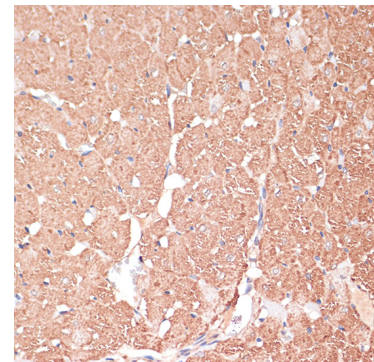
Western blot analysis of various lysates using FRMD6 Rabbit pAb (A9995) at 1:1000 dilution. Secondary antibody: HRP-conjugated Goat anti-Rabbit IgG (H+L) (AS014) at 1:10000 dilution. Lysates/proteins: 25µg per lane. Blocking buffer: 3% nonfat dry milk in TBST. Detection: ECL Basic Kit (RM00020). Exposure time: 5s.



Immunofluorescence analysis of C6 cells using FRMD6 Rabbit pAb (A9995) at dilution of 1:100. Blue: DAPI for nuclear staining.

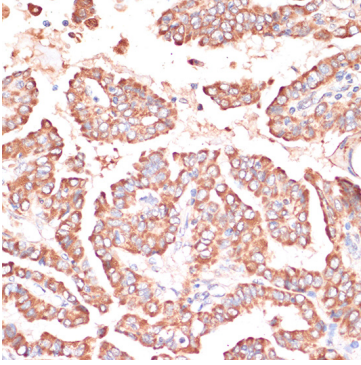


Immunofluorescence analysis of U2OS cells using FRMD6 Rabbit pAb (A9995) at dilution of 1:100. Blue: DAPI for nuclear staining.

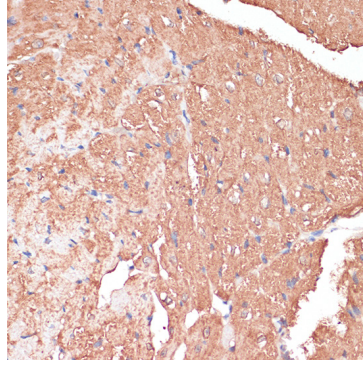


Immunohistochemistry analysis of paraffin-embedded Rat heart using FRMD6 Rabbit pAb (A9995) at dilution of 1:100 (40x lens). Microwave antigen retrieval performed with 0.01M PBS Buffer (pH 7.2) prior to IHC staining.

Validation Data



Immunohistochemistry analysis of paraffin-embedded Human thyroid cancer using FRMD6 Rabbit pAb (A9995) at dilution of 1:100 (40x lens). Microwave antigen retrieval performed with 0.01M PBS Buffer (pH 7.2) prior to IHC staining.



Immunohistochemistry analysis of paraffin-embedded Mouse heart using FRMD6 Rabbit pAb (A9995) at dilution of 1:100 (40x lens). Microwave antigen retrieval performed with 0.01M PBS Buffer (pH 7.2) prior to IHC staining.