

Alpha-tubulin (ubiquitous) chain Rabbit pAb

Catalog No.: AC003 **20 Publications**

Basic Information

Observed MW

50kDa

Calculated MW

50kDa

Category

Loading control antibody

Applications

WB,IF/ICC,IP,FC

Cross-Reactivity

Human, Mouse, Rat

Background

Enables double-stranded RNA binding activity and ubiquitin protein ligase binding activity. Predicted to be involved in microtubule cytoskeleton organization and mitotic cell cycle. Predicted to act upstream of or within cellular response to interleukin-4. Located in microtubule.

Recommended Dilutions

WB	1:500 - 1:2000
IF/ICC	1:20 - 1:100
IP	1:20 - 1:50
FC	1:20 - 1:50

Immunogen Information

Gene ID

10376

Swiss Prot

P68363

Immunogen

Recombinant protein of human Alpha-tubulin (ubiquitous) chain

Synonyms

K-ALPHA-1; Alpha-tubulin (ubiquitous) chain

Contact

☎ | 400-999-6126

✉ | cn.market@abclonal.com.cn

🌐 | www.abclonal.com.cn

Product Information

Source

Rabbit

Isotype

IgG

Purification

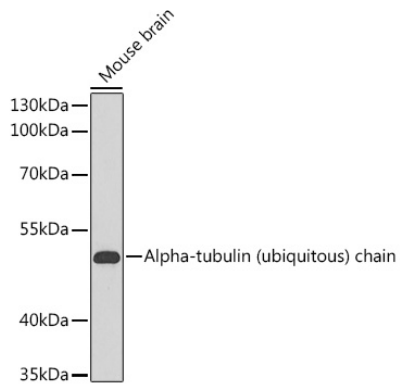
Affinity purification

Storage

Store at -20°C. Avoid freeze / thaw cycles.

Buffer: PBS with 0.02% sodium azide,50% glycerol,pH7.3.

Validation Data



Western blot analysis of extracts of mouse brain, using Alpha-tubulin (ubiquitous) chain antibody (AC003).
Secondary antibody: HRP Goat Anti-Rabbit IgG (H+L) (AS014) at 1:10000 dilution.
Lysates/proteins: 25µg per lane.
Blocking buffer: 3% nonfat dry milk in TBST.