

# $\beta$ -Actin Mouse mAb

Catalog No.: AC004 **525 Publications**

## Basic Information

### Observed MW

42 kDa

### Calculated MW

42kDa

### Category

Loading control antibody

### Applications

WB,IHC-P,IF/ICC,ELISA

### Cross-Reactivity

Human, Mouse, Rat

### CloneNo number

AMC0001

## Recommended Dilutions

**WB** 1:10000-1:100000**IHC-P** 1:1000 - 1:10000**IF/ICC** 1:50 - 1:200**ELISA** Recommended starting concentration is 1  $\mu$ g/mL. Please optimize the concentration based on your specific assay requirements.

## Contact

 | 400-999-6126 | [cn.market@abclonal.com.cn](mailto:cn.market@abclonal.com.cn) | [www.abclonal.com.cn](http://www.abclonal.com.cn)

## Background

This gene encodes one of six different actin proteins. Actins are highly conserved proteins that are involved in cell motility, structure, integrity, and intercellular signaling. The encoded protein is a major constituent of the contractile apparatus and one of the two nonmuscle cytoskeletal actins that are ubiquitously expressed. Mutations in this gene cause Baraitser-Winter syndrome 1, which is characterized by intellectual disability with a distinctive facial appearance in human patients. Numerous pseudogenes of this gene have been identified throughout the human genome.

## Immunogen Information

### Gene ID

60

### Swiss Prot

P60709

### Immunogen

Recombinant protein (or fragment). This information is considered to be commercially sensitive.

### Synonyms

BRWS1; PS1TP5BP1;  $\beta$ -Actin

## Product Information

### Source

Mouse

### Isotype

IgG1,Kappa

### Purification

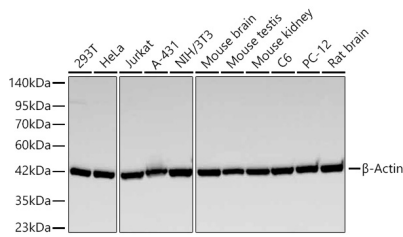
Affinity purification

### Storage

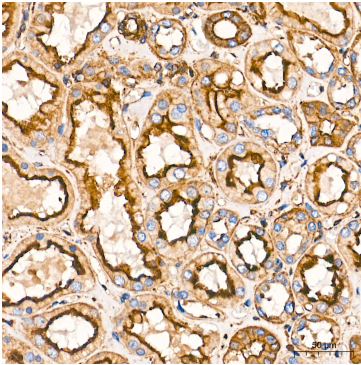
Store at -20°C. Avoid freeze / thaw cycles.

Buffer: PBS containing 50% glycerol, preserved with proclin300 or sodium azide (as specified on the Certificate of Analysis), pH 7.3.

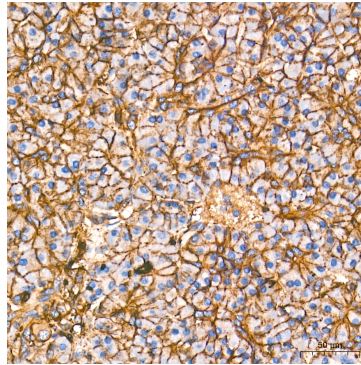
## Validation Data



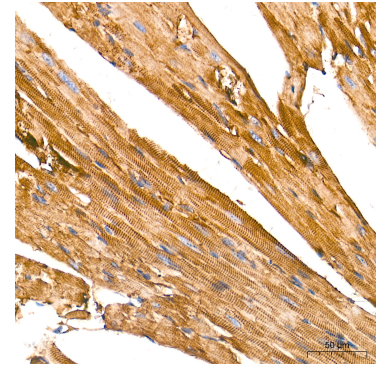
Western blot analysis of various lysates using  $\beta$ -Actin Mouse mAb (AC004) at 1:22000 dilution incubated overnight at 4°C.  
 Secondary antibody: HRP-conjugated Goat anti-Mouse IgG (H+L) (AS003) at 1:10000 dilution.  
 Lysates/proteins: 25  $\mu$ g per lane.  
 Blocking buffer: 3% nonfat dry milk in TBST.  
 Detection: ECL Basic Kit (RM00020).  
 Exposure time: 60 s.



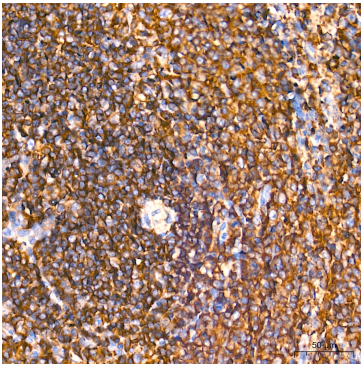
Immunohistochemistry analysis of paraffin-embedded Human kidney tissue using  $\beta$ -Actin Mouse mAb (AC004) at a dilution of 1:6000 (40x lens). High pressure antigen retrieval performed with 0.01M Tris-EDTA Buffer (pH 9.0) prior to IHC staining.



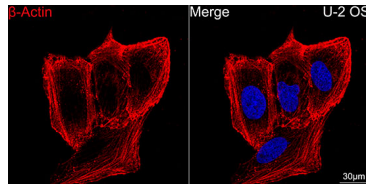
Immunohistochemistry analysis of paraffin-embedded Human pancreas tissue using  $\beta$ -Actin Mouse mAb (AC004) at a dilution of 1:6000 (40x lens). High pressure antigen retrieval performed with 0.01M Tris-EDTA Buffer (pH 9.0) prior to IHC staining.



Immunohistochemistry analysis of paraffin-embedded Mouse heart tissue using  $\beta$ -Actin Mouse mAb (AC004) at a dilution of 1:6000 (40x lens). High pressure antigen retrieval performed with 0.01M Tris-EDTA Buffer (pH 9.0) prior to IHC staining.



Immunohistochemistry analysis of paraffin-embedded Rat spleen tissue using  $\beta$ -Actin Mouse mAb (AC004) at a dilution of 1:6000 (40x lens). High pressure antigen retrieval performed with 0.01M Tris-EDTA Buffer (pH 9.0) prior to IHC staining.



Confocal imaging of U-2 OS cells using  $\beta$ -Actin Mouse mAb (AC004, dilution 1:200) followed by a further incubation with Cy3-conjugated Goat anti-Mouse IgG (H+L) (AS008, dilution 1:500) (Red). DAPI was used for nuclear staining (Blue). Objective: 100x.