

# Mouse Control IgG

Catalog No.: AC011 **78 Publications**

## Basic Information

### Observed MW

### Calculated MW

### Category

Loading control antibody

### Applications

IP

### Cross-Reactivity

## Background

Mouse IgG raised from normal mouse serum. Mouse Control IgG is an isotype control antibody, which is used to estimate the non-specific binding of target primary antibodies due to Fc receptor binding or other protein-protein interactions. Mouse IgG typically constitutes 75% of serum immunoglobulins. Mouse IgG molecules are synthesized and secreted by plasma B cells. Ideal as a negative control for immunoprecipitation applications.

## Recommended Dilutions

**IP** 0.5ug-4ug antibody for  
200ug-400ug extracts of  
whole cells

## Immunogen Information

### Gene ID

Swiss Prot

### Immunogen

None

### Synonyms

## Contact

 | 400-999-6126

 | [cn.market@abclonal.com.cn](mailto:cn.market@abclonal.com.cn)

 | [www.abclonal.com.cn](http://www.abclonal.com.cn)

## Product Information

### Source

Mouse

### Isotype

IgG

### Purification

Potein A/G purification

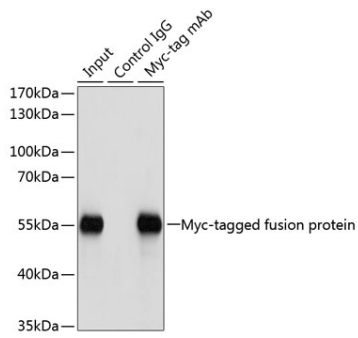
### Storage

Store at -20°C. Avoid freeze / thaw cycles.

Buffer: PBS with 0.09% Sodium azide,50% glycerol,pH7.3.

## Validation Data

---



Immunoprecipitation of over-expressed Myc-tagged protein in 293T cells incubated using Myc-tag antibody (AE010). A mock served as negative control using mouse Control IgG [AC011] and over-expressed 293T cell lysate served as positive control.