

# β-Tubulin Rabbit pAb

Catalog No.: AC015

30 Publications

## Basic Information

### Observed MW

55kDa

### Calculated MW

50kDa

### Category

Loading control antibody

### Applications

WB,IHC-P,IF/ICC

### Cross-Reactivity

Human, Mouse, Rat

## Background

This gene encodes a beta tubulin protein. This protein forms a dimer with alpha tubulin and acts as a structural component of microtubules. Mutations in this gene cause cortical dysplasia, complex, with other brain malformations 6. Alternative splicing results in multiple splice variants. There are multiple pseudogenes for this gene on chromosomes 1, 6, 7, 8, 9, and 13.

## Recommended Dilutions

WB	1:500 - 1:2000
IHC-P	1:50 - 1:200
IF/ICC	1:50 - 1:200

## Immunogen Information

### Gene ID

203068

### Swiss Prot

P07437

### Immunogen

Recombinant fusion protein containing a sequence corresponding to amino acids 40-260 of human β-Tubulin (NP\_006077.2).

### Synonyms

M40; TUBB1; TUBB5; CDCBM6; CSCSC1; OK/SW-cl.56; β-Tubulin

## Contact

☎ | 400-999-6126

✉ | [cn.market@abclonal.com.cn](mailto:cn.market@abclonal.com.cn)

🌐 | [www.abclonal.com.cn](http://www.abclonal.com.cn)

## Product Information

### Source

Rabbit

### Isotype

IgG

### Purification

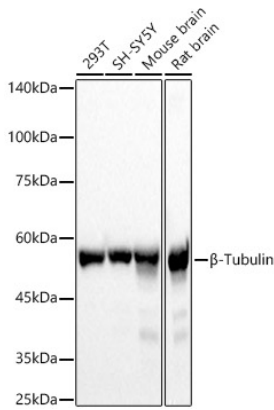
Affinity purification

### Storage

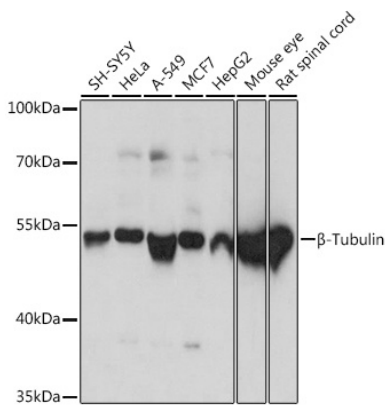
Store at -20°C. Avoid freeze / thaw cycles.

Buffer: PBS with 0.01% thimerosal,50% glycerol,pH7.3.

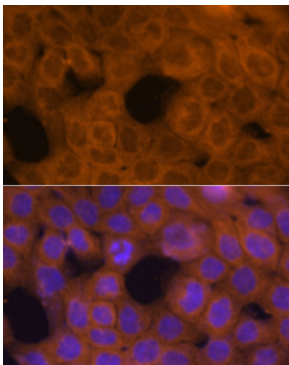
## Validation Data



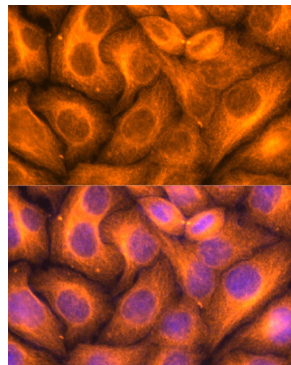
Western blot analysis of various lysates, using  $\beta$ -Tubulin Rabbit pAb (AC015) at 1:2000 dilution. Secondary antibody: HRP Goat Anti-Rabbit IgG (H+L) (AS014) at 1:10000 dilution. Lysates/proteins: 25 $\mu$ g per lane. Blocking buffer: 3% nonfat dry milk in TBST. Detection: ECL Basic Kit (RM00020). Exposure time: 1s.



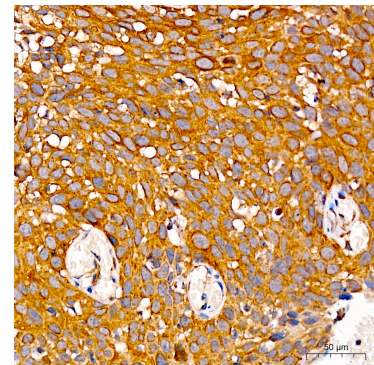
Western blot analysis of various lysates using  $\beta$ -Tubulin Rabbit pAb (AC015) at 1:1000 dilution. Secondary antibody: HRP Goat Anti-Rabbit IgG (H+L) (AS014) at 1:10000 dilution. Lysates/proteins: 25 $\mu$ g per lane. Blocking buffer: 3% nonfat dry milk in TBST. Detection: ECL Basic Kit (RM00020). Exposure time: 3s.



Immunofluorescence analysis of A431 cells using  $\beta$ -Tubulin Rabbit pAb (AC015) at dilution of 1:100. Secondary antibody: Cy3 Goat Anti-Rabbit IgG (H+L) (AS007) at 1:500 dilution. Blue: DAPI for nuclear staining.



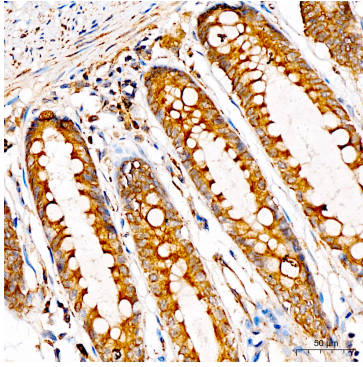
Immunofluorescence analysis of HeLa cells using  $\beta$ -Tubulin Rabbit pAb (AC015) at dilution of 1:100. Secondary antibody: Cy3 Goat Anti-Rabbit IgG (H+L) (AS007) at 1:500 dilution. Blue: DAPI for nuclear staining.



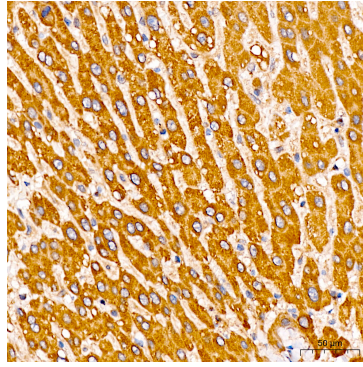
Immunohistochemistry analysis of  $\beta$ -Tubulin in paraffin-embedded human cervix cancer tissue using  $\beta$ -Tubulin Rabbit pAb (AC015) at a dilution of 1:100 (40x lens). High pressure antigen retrieval was performed with 0.01 M citrate buffer (pH 6.0) prior to IHC staining.

## Validation Data

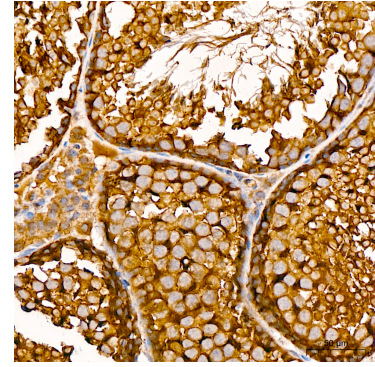
---



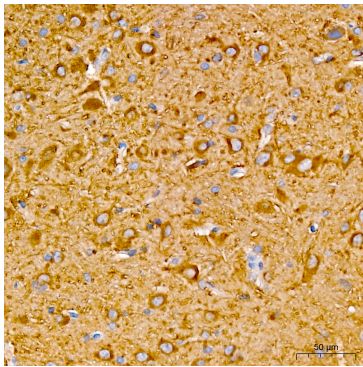
Immunohistochemistry analysis of  $\beta$ -Tubulin in paraffin-embedded human colon tissue using  $\beta$ -Tubulin Rabbit pAb (AC015) at a dilution of 1:100 (40x lens). High pressure antigen retrieval was performed with 0.01 M citrate buffer (pH 6.0) prior to IHC staining.



Immunohistochemistry analysis of  $\beta$ -Tubulin in paraffin-embedded human liver tissue using  $\beta$ -Tubulin Rabbit pAb (AC015) at a dilution of 1:100 (40x lens). High pressure antigen retrieval was performed with 0.01 M citrate buffer (pH 6.0) prior to IHC staining.



Immunohistochemistry analysis of  $\beta$ -Tubulin in paraffin-embedded mouse testis tissue using  $\beta$ -Tubulin Rabbit pAb (AC015) at a dilution of 1:100 (40x lens). High pressure antigen retrieval was performed with 0.01 M citrate buffer (pH 6.0) prior to IHC staining.



Immunohistochemistry analysis of  $\beta$ -Tubulin in paraffin-embedded rat brain tissue using  $\beta$ -Tubulin Rabbit pAb (AC015) at a dilution of 1:100 (40x lens). High pressure antigen retrieval was performed with 0.01 M citrate buffer (pH 6.0) prior to IHC staining.