

# Actin (plant specific) Rabbit pAb

Catalog No.: AC022

## Basic Information

### Observed MW

42kDa

### Calculated MW

45kDa

### Category

Loading control antibody

### Applications

WB

### Cross-Reactivity

Various Plants

## Background

Actins are highly conserved proteins that are involved in cell motility, structure, and integrity. This actin is a major constituent of the contractile apparatus and one of the two nonmuscle cytoskeletal actins.

## Recommended Dilutions

WB 1:500 - 1:1000

## Immunogen Information

### Gene ID

### Swiss Prot

### Immunogen

A synthetic peptide corresponding to Actin (plant specific).

### Synonyms

## Contact

☎ | 400-999-6126

✉ | [cn.market@abclonal.com.cn](mailto:cn.market@abclonal.com.cn)

🌐 | [www.abclonal.com.cn](http://www.abclonal.com.cn)

## Product Information

### Source

Rabbit

### Isotype

IgG1

### Purification

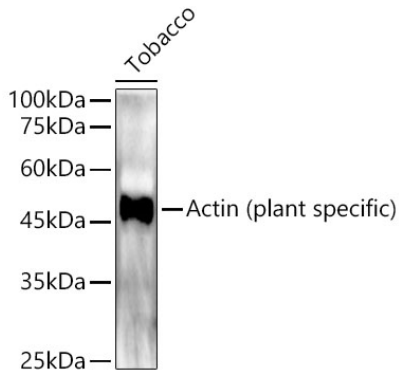
Affinity purification

### Storage

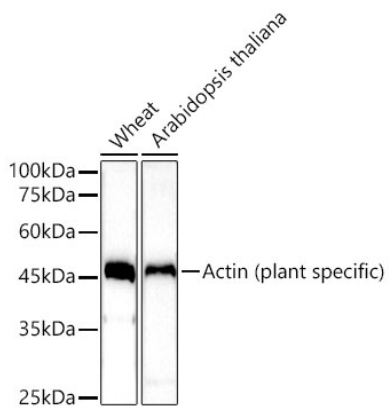
Store at -20°C. Avoid freeze / thaw cycles.

Buffer: PBS with 0.02% sodium azide, 50% glycerol, pH 7.3.

## Validation Data



Western blot analysis of lysates from Tobacco, using Actin (plant specific) Rabbit pAb (AC022) at 1:1000 dilution.  
Secondary antibody: HRP-conjugated Goat anti-Rabbit IgG (H+L) (AS014) at 1:10000 dilution.  
Lysates/proteins: 25µg per lane.  
Blocking buffer: 3% nonfat dry milk in TBST.  
Detection: ECL Enhanced Kit (RM00021).  
Exposure time: 60s.



Western blot analysis of extracts of various tissues from Arabidopsis thaliana, using Actin (plant specific) Rabbit pAb (AC022) at 1:1460 dilution.  
Secondary antibody: HRP-conjugated Goat anti-Rabbit IgG (H+L) (AS014) at 1:10000 dilution.  
Lysates/proteins: 25µg per lane.  
Blocking buffer: 3% nonfat dry milk in TBST.  
Detection: ECL Basic Kit (RM00020).  
Exposure time: 180s.