

# Alpha-tubulin (ubiquitous) chain Rabbit pAb

Catalog No.: AC024

2 Publications

## Basic Information

### Observed MW

52kDa

### Calculated MW

50kDa

### Category

Loading control antibody

### Applications

WB, IHC-P, IF/ICC

### Cross-Reactivity

Human, Mouse, Rat

## Background

Enables double-stranded RNA binding activity and ubiquitin protein ligase binding activity. Predicted to be involved in microtubule cytoskeleton organization and mitotic cell cycle. Predicted to act upstream of or within cellular response to interleukin-4. Located in microtubule.

## Recommended Dilutions

<b>WB</b>	1:500 - 1:1000
<b>IHC-P</b>	1:50 - 1:200
<b>IF/ICC</b>	1:50 - 1:200

## Immunogen Information

### Gene ID

10376

### Swiss Prot

P68363

### Immunogen

Recombinant protein (or fragment). This information is considered to be commercially sensitive.

### Synonyms

K-ALPHA-1; Alpha-tubulin (ubiquitous) chain

## Contact

		400-999-6126
		<a href="mailto:cn.market@abclonal.com.cn">cn.market@abclonal.com.cn</a>
		<a href="http://www.abclonal.com.cn">www.abclonal.com.cn</a>

## Product Information

### Source

Rabbit

### Isotype

IgG

### Purification

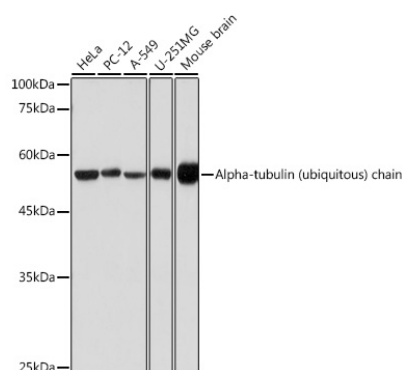
Affinity purification

### Storage

Store at -20°C. Avoid freeze / thaw cycles.

Buffer: PBS containing 50% glycerol, preserved with proclin300 or sodium azide (as specified on the Certificate of Analysis), pH 7.3.

## Validation Data



Western blot analysis of various lysates using Alpha-tubulin (ubiquitous) chain Rabbit pAb (AC024) at 1:500 dilution.

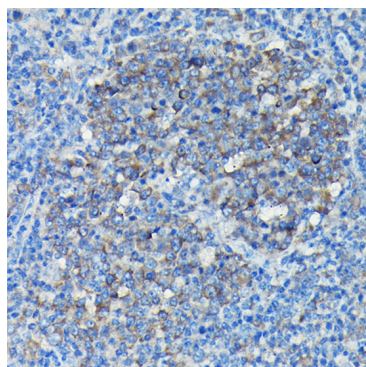
Secondary antibody: HRP-conjugated Goat anti-Rabbit IgG (H+L) (AS014) at 1:10000 dilution.

Lysates/proteins: 25µg per lane.

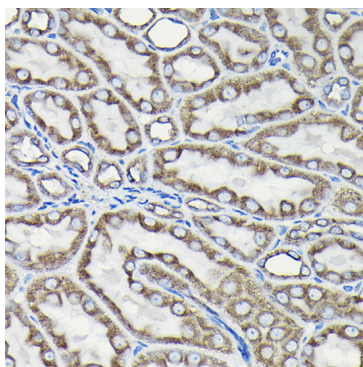
Blocking buffer: 3% nonfat dry milk in TBST.

Detection: ECL Basic Kit (RM00020).

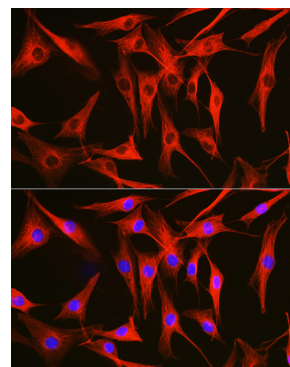
Exposure time: 1s.



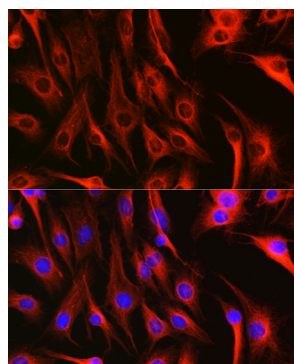
Immunohistochemistry analysis of paraffin-embedded Mouse spleen using Alpha-tubulin (ubiquitous) chain Rabbit pAb (AC024) at dilution of 1:50 (40x lens). High pressure antigen retrieval performed with 0.01M Citrate buffer (pH 6.0) prior to IHC staining.



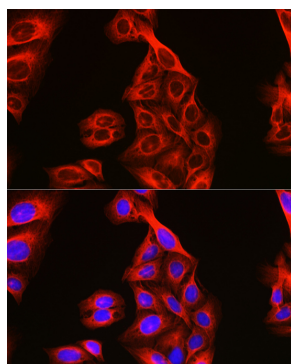
Immunohistochemistry analysis of paraffin-embedded Rat kidney using Alpha-tubulin (ubiquitous) chain Rabbit pAb (AC024) at dilution of 1:50 (40x lens). High pressure antigen retrieval performed with 0.01M Citrate buffer (pH 6.0) prior to IHC staining.



Immunofluorescence analysis of NIH/3T3 cells using Alpha-tubulin (ubiquitous) chain Rabbit pAb (AC024) at dilution of 1:100. Secondary antibody: Cy3-conjugated Goat anti-Rabbit IgG (H+L) (AS007) at 1:500 dilution. Blue: DAPI for nuclear staining.



Immunofluorescence analysis of C6 cells using Alpha-tubulin (ubiquitous) chain Rabbit pAb (AC024) at dilution of 1:100. Secondary antibody: Cy3-conjugated Goat anti-Rabbit IgG (H+L) (AS007) at 1:500 dilution. Blue: DAPI for nuclear staining.



Immunofluorescence analysis of U2OS cells using Alpha-tubulin (ubiquitous) chain Rabbit pAb (AC024) at dilution of 1:100. Secondary antibody: Cy3-conjugated Goat anti-Rabbit IgG (H+L) (AS007) at 1:500 dilution. Blue: DAPI for nuclear staining.