

# HRP-conjugated $\beta$ -Actin Rabbit mAb

Catalog No.: AC028 **Recombinant** **99 Publications**

## Basic Information

### Observed MW

42 kDa

### Calculated MW

42 kDa

### Category

Loading control antibody

### Applications

WB, ELISA

### Cross-Reactivity

Human, Mouse, Rat, Chicken, Zebrafish, Pig

### CloneNo number

ARC5115-01

### Conjugate

HRP

## Recommended Dilutions

**WB** 1:50000-1:200000

**ELISA** Recommended starting concentration is 1  $\mu$ g/mL. Please optimize the concentration based on your specific assay requirements.

## Contact

 | 400-999-6126

 | [cn.market@abclonal.com.cn](mailto:cn.market@abclonal.com.cn)

 | [www.abclonal.com.cn](http://www.abclonal.com.cn)

## Background

This gene encodes one of six different actin proteins. Actins are highly conserved proteins that are involved in cell motility, structure, integrity, and intercellular signaling. The encoded protein is a major constituent of the contractile apparatus and one of the two nonmuscle cytoskeletal actins that are ubiquitously expressed. Mutations in this gene cause Baraitser-Winter syndrome 1, which is characterized by intellectual disability with a distinctive facial appearance in human patients. Numerous pseudogenes of this gene have been identified throughout the human genome.

## Immunogen Information

### Gene ID

60

### Swiss Prot

P60709

### Immunogen

Recombinant protein (or fragment). This information is considered to be commercially sensitive.

### Synonyms

BRWS1; PS1TP5BP1; HRP-conjugated  $\beta$ -Actin

## Product Information

### Source

Rabbit

### Isotype

IgG

### Purification

Affinity purification

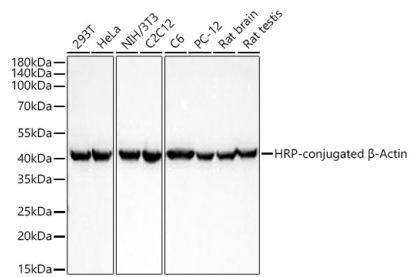
### Storage

Store at -20°C. Avoid freeze / thaw cycles.

Buffer: PBS containing 50% glycerol and 0.05% BSA, preserved with proclin300 or sodium azide (as specified on the Certificate of Analysis), pH 7.3.

## Validation Data

---



Western blot analysis of various lysates using HRP-conjugated  $\beta$ -Actin Rabbit mAb (AC028) at 1:200000 dilution incubated overnight at 4°C.  
Lysates/proteins: 25  $\mu$ g per lane.  
Blocking buffer: 3% nonfat dry milk in TBST.  
Detection: ECL Basic Kit (RM00020).  
Exposure time: 10 s.