

# HRP-conjugated $\beta$ -Tubulin Mouse mAb

Catalog No.: AC030

16 Publications

## Basic Information

### Observed MW

55kDa

### Calculated MW

50kDa

### Category

Loading control antibody

### Applications

WB,ELISA

### Cross-Reactivity

Human, Mouse, Rat

### CloneNo number

AMC0499

### Conjugate

HRP

## Recommended Dilutions

**WB** 1:10000 - 1:50000

**ELISA** Recommended starting concentration is 1  $\mu$ g/mL. Please optimize the concentration based on your specific assay requirements.

## Background

This gene encodes a beta tubulin protein. This protein forms a dimer with alpha tubulin and acts as a structural component of microtubules. Mutations in this gene cause cortical dysplasia, complex, with other brain malformations 6. Alternative splicing results in multiple splice variants. There are multiple pseudogenes for this gene on chromosomes 1, 6, 7, 8, 9, and 13.

## Immunogen Information

### Gene ID

203068

### Swiss Prot

P07437

### Immunogen

Recombinant protein of human TUBB

### Synonyms

M40; TUBB1; TUBB5; CDCBM6; CSCSC1; OK/SW-cl.56; HRP-conjugated  $\beta$ -Tubulin

## Contact

☎ | 400-999-6126

✉ | [cn.market@abclonal.com.cn](mailto:cn.market@abclonal.com.cn)

🌐 | [www.abclonal.com.cn](http://www.abclonal.com.cn)

## Product Information

### Source

Mouse

### Isotype

IgG1,Kappa

### Purification

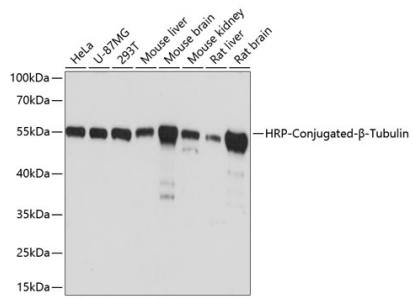
Affinity purification

### Storage

Store at -20°C. Avoid freeze / thaw cycles.  
Buffer: PBS with 50% glycerol,pH7.3.

## Validation Data

---



Western blot analysis of various lysates using HRP-conjugated  $\beta$ -Tubulin Mouse mAb (AC030) at 1:10000 dilution.

Lysates/proteins: 25 $\mu$ g per lane.

Blocking buffer: 3% nonfat dry milk in TBST.

Detection: ECL Basic Kit (RM00020).

Exposure time: 1s.