

HRP-conjugated GAPDH Mouse mAb

Catalog No.: AC035 **18 Publications**

Basic Information

Observed MW

36kDa

Calculated MW

36kDa

Category

Loading control antibody

Applications

ELISA,WB

Cross-Reactivity

Human, Mouse, Rat

CloneNo number

AMC0062R

Conjugate

HRP

Recommended Dilutions

WB 1:2000 - 1:10000

Background

This gene encodes a member of the glyceraldehyde-3-phosphate dehydrogenase protein family. The encoded protein has been identified as a moonlighting protein based on its ability to perform mechanistically distinct functions. The product of this gene catalyzes an important energy-yielding step in carbohydrate metabolism, the reversible oxidative phosphorylation of glyceraldehyde-3-phosphate in the presence of inorganic phosphate and nicotinamide adenine dinucleotide (NAD). The encoded protein has additionally been identified to have uracil DNA glycosylase activity in the nucleus. Also, this protein contains a peptide that has antimicrobial activity against *E. coli*, *P. aeruginosa*, and *C. albicans*. Studies of a similar protein in mouse have assigned a variety of additional functions including nitrosylation of nuclear proteins, the regulation of mRNA stability, and acting as a transferrin receptor on the cell surface of macrophage. Many pseudogenes similar to this locus are present in the human genome. Alternative splicing results in multiple transcript variants.

Immunogen Information

Gene ID

2597

Swiss Prot

P04406


Immunogen

Recombinant fusion protein containing a sequence corresponding to amino acids 1-335 of human GAPDH (NP_002037.2).

Synonyms

G3PD; GAPD; HEL-S-162eP; HRP-conjugated GAPDH

Contact

 | 400-999-6126 | cn.market@abclonal.com.cn | www.abclonal.com.cn

Product Information

Source

Mouse

Isotype

IgG1,Kappa

Purification

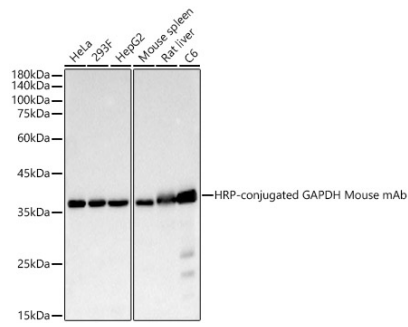
Affinity purification

Storage

Store at -20°C. Avoid freeze / thaw cycles.

Buffer: PBS with 0.05% proclin300,50% glycerol,pH7.3

Validation Data



Western blot analysis of various lysates, using HRP-conjugated GAPDH Mouse mAb (AC035) at 1:10000 dilution.

Lysates/proteins: 25µg per lane.

Blocking buffer: 3% nonfat dry milk in TBST.

Detection: ECL Basic Kit (RM00020).

Exposure time: 10s.