

# HRP-conjugated $\beta$ -Actin Mouse mAb

Catalog No.: AC043

6 Publications

## Basic Information

**Observed MW**

42 kDa

**Calculated MW**

42 kDa

**Category**

Loading control antibody

**Applications**

WB, ELISA

**Cross-Reactivity**

Human, Mouse, Rat, Monkey

**CloneNo number**

AMC0001

**Conjugate**

HRP

## Recommended Dilutions

**WB** 1:2000 - 1:50000**ELISA** Recommended starting concentration is 1  $\mu$ g/mL. Please optimize the concentration based on your specific assay requirements.

## Background

This gene encodes one of six different actin proteins. Actins are highly conserved proteins that are involved in cell motility, structure, integrity, and intercellular signaling. The encoded protein is a major constituent of the contractile apparatus and one of the two nonmuscle cytoskeletal actins that are ubiquitously expressed. Mutations in this gene cause Baraitser-Winter syndrome 1, which is characterized by intellectual disability with a distinctive facial appearance in human patients. Numerous pseudogenes of this gene have been identified throughout the human genome.

## Immunogen Information

**Gene ID**

60

**Swiss Prot**

P60709

**Immunogen**

Recombinant protein (or fragment). This information is considered to be commercially sensitive.

**Synonyms**BRWS1; PS1TP5BP1; HRP-conjugated  $\beta$ -Actin

## Contact

 | 400-999-6126 | [cn.market@abclonal.com.cn](mailto:cn.market@abclonal.com.cn) | [www.abclonal.com.cn](http://www.abclonal.com.cn)

## Product Information

**Source**

Mouse

**Isotype**

IgG1, Lambda

**Purification**

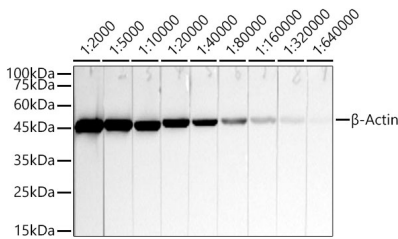
Affinity purification

**Storage**

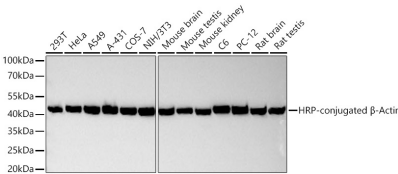
Store at -20°C. Avoid freeze / thaw cycles.

Buffer: PBS containing 50% glycerol, preserved with proclin300 or sodium azide (as specified on the Certificate of Analysis), pH 7.3.

Validation Data



Western blot analysis of lysates from HeLa, using HRP-conjugated  $\beta$ -Actin Rabbit mAb (AC043) at 1:2000-1:640000 dilution.  
Lysates/proteins: 25 $\mu$ g per lane.  
Blocking buffer: 3% nonfat dry milk in TBST.  
Detection: ECL Basic Kit (RM00020).  
Exposure time: 10 s.



Western blot analysis of various lysates using HRP-conjugated  $\beta$ -Actin Mouse mAb (AC043) at 1:10000 dilution incubated overnight at 4°C.  
Lysates/proteins: 25  $\mu$ g per lane.  
Blocking buffer: 3% nonfat dry milk in TBST.  
Detection: ECL Basic Kit (RM00020).  
Exposure time: 5 s.