

# $\beta$ -Actin Rabbit mAb

Catalog No.: AC050

Recombinant

10 Publications

## Basic Information

### Observed MW

42 kDa

### Calculated MW

42kDa

### Category

Loading control antibody

### Applications

WB,IHC-P,IF/ICC,ELISA

### Cross-Reactivity

Human, Mouse, Rat

### CloneNo number

ARC5115-03

## Background

This gene encodes one of six different actin proteins. Actins are highly conserved proteins that are involved in cell motility, structure, integrity, and intercellular signaling. The encoded protein is a major constituent of the contractile apparatus and one of the two nonmuscle cytoskeletal actins that are ubiquitously expressed. Mutations in this gene cause Baraitser-Winter syndrome 1, which is characterized by intellectual disability with a distinctive facial appearance in human patients. Numerous pseudogenes of this gene have been identified throughout the human genome.

## Recommended Dilutions

<b>WB</b>	1:10000 - 1:50000
-----------	-------------------

<b>IHC-P</b>	1:500 - 1:1000
--------------	----------------

<b>IF/ICC</b>	1:50 - 1:200
---------------	--------------

<b>ELISA</b>	Recommended starting concentration is 1 $\mu$ g/mL. Please optimize the concentration based on your specific assay requirements.
--------------	--

## Immunogen Information

### Gene ID

60

### Swiss Prot

P60709


### Immunogen

Recombinant protein (or fragment). This information is considered to be commercially sensitive.

### Synonyms

BRWS1; PS1TP5BP1;  $\beta$ -Actin

## Contact

		400-999-6126
--	--	--------------

		cn.market@abclonal.com.cn
--	--	---------------------------

		<a href="http://www.abclonal.com.cn">www.abclonal.com.cn</a>
--	--	--

## Product Information

### Source

Rabbit

### Isotype

IgG

### Purification

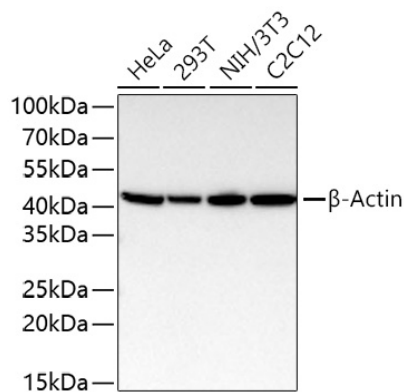
Affinity purification

### Storage

Store at -20°C. Avoid freeze / thaw cycles.

Buffer: PBS with 0.09% Sodium azide, 0.05% BSA, 50% glycerol, pH7.3.

## Validation Data



Western blot analysis of various lysates using  $\beta$ -Actin Rabbit mAb (AC050) at 1:12000 dilution incubated overnight at 4°C.

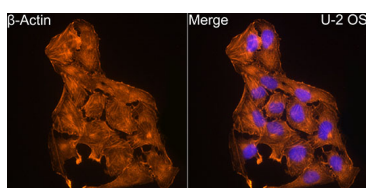
Secondary antibody: HRP-conjugated Goat anti-Rabbit IgG (H+L) (AS014) at 1:10000 dilution.

Lysates/proteins: 25  $\mu$ g per lane.

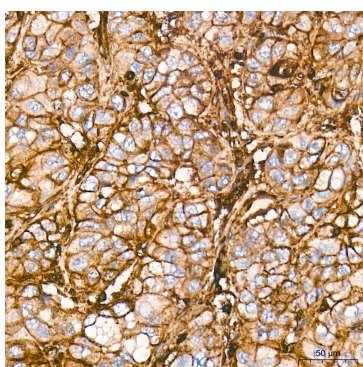
Blocking buffer: 3% nonfat dry milk in TBST.

Detection: ECL Basic Kit (RM00020).

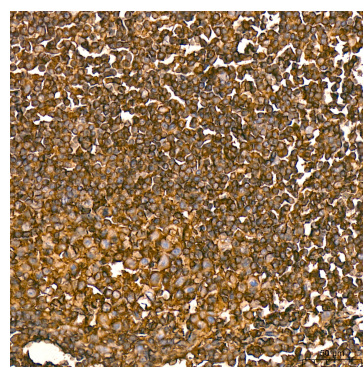
Exposure time: 5 s.



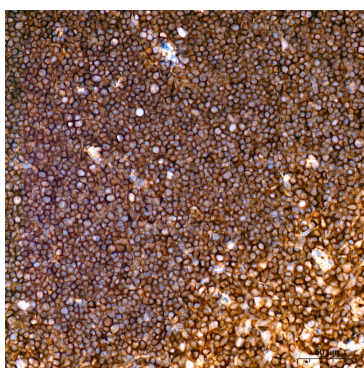
Immunofluorescence analysis of U2OS cells using  $\beta$ -Actin Rabbit mAb (AC050) at dilution of 1:100 (40x lens). Secondary antibody: Cy3-conjugated Goat anti-Rabbit IgG (H+L) (AS007) at 1:500 dilution. Blue: DAPI for nuclear staining.



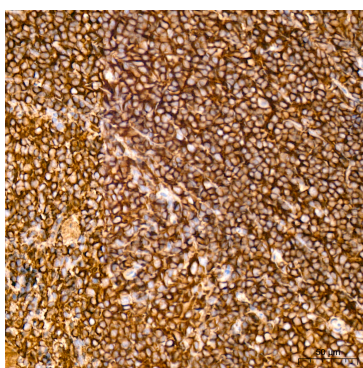
Immunohistochemistry analysis of paraffin-embedded Human liver tissue using  $\beta$ -Actin Rabbit mAb (AC050) at a dilution of 1:800 (40x lens). High pressure antigen retrieval performed with 0.01M Citrate Buffer (pH 6.0) prior to IHC staining.



Immunohistochemistry analysis of paraffin-embedded Human tonsil tissue using  $\beta$ -Actin Rabbit mAb (AC050) at a dilution of 1:800 (40x lens). High pressure antigen retrieval performed with 0.01M Citrate Buffer (pH 6.0) prior to IHC staining.



Immunohistochemistry analysis of paraffin-embedded Mouse spleen tissue using  $\beta$ -Actin Rabbit mAb (AC050) at a dilution of 1:800 (40x lens). High pressure antigen retrieval performed with 0.01M Citrate Buffer (pH 6.0) prior to IHC staining.



Immunohistochemistry analysis of paraffin-embedded Rat spleen tissue using  $\beta$ -Actin Rabbit mAb (AC050) at a dilution of 1:800 (40x lens). High pressure antigen retrieval performed with 0.01M Citrate Buffer (pH 6.0) prior to IHC staining.